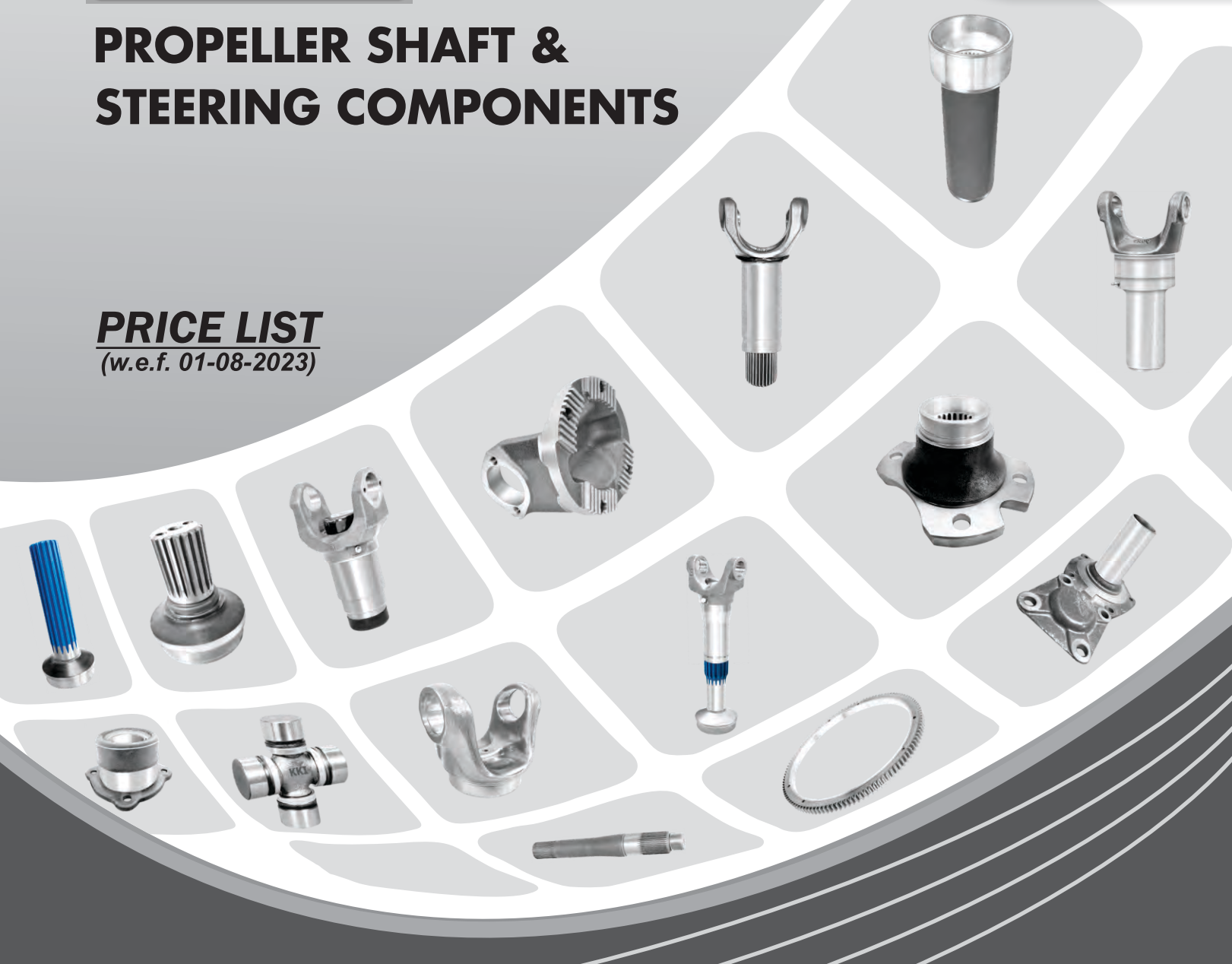




**AUGUST  
2023**

# PROPELLER SHAFT & STEERING COMPONENTS

**PRICE LIST**  
(w.e.f. 01-08-2023)








**SCAN ME FOR DOWNLOADING APP KKI AUTOS**

**DOWNLOAD APP  
KKI AUTOS**




 [info@shaftcomponents.com](mailto:info@shaftcomponents.com)

 [www.shaftcomponents.com](http://www.shaftcomponents.com)

**TRUST OF EXPERIENCE — TRUST IN PERFORMANCE**

Part No.	Description	Series	Cross Size	No. of Spline	Length	Pipe Dia	Ref. Catalogue Page No.	M.R.P. ₹
<b>SY 201</b>	Sleeve Yoke Assembly, Tata 1312/1612/1510/2416/2213	1312	46 mm	16			86	<b>5330/-</b>
<b>SY 202</b>	Sleeve Yoke, Tata 1312/1612, Ref O.E.M - 2576 4112 5104	1312	46 mm	16	10½"		12	<b>2440/-</b>
<b>SY 203</b>	Sleeve Yoke, Tata 1613 Turbo/1109	1312	46 mm	24	10½"		12	<b>2500/-</b>
<b>SY 204</b>	Sleeve Yoke, Tata Hywa 2515/3516 (Converted From 28 to 16 Splines)	Tusker	34.92 x 126.20	16	12½"		13	<b>3110/-</b>
<b>SY 205</b>	Sleeve Yoke, Tata 1312 Long	1312	46 mm	16	12½"		12	<b>3140/-</b>
<b>SY 207</b>	Sleeve Yoke, 10" (Thin Splines) L/L 2214	SPR SPL 90	41.27 x 126	30	12"		12	<b>2930/-</b>
<b>SY 208</b>	Sleeve Yoke, Tata 4018, L/L 2516 (With Rubber Cup Threaded)	4018 Patti Type	49.20 x 154.90	16	11"		15	<b>4570/-</b>
<b>SY 209</b>	Sleeve Yoke Assembly, Tata 1210 SE	1210	38 mm	10			86	<b>3740/-</b>
<b>SY 210</b>	Sleeve Yoke, Tata 1210 SE	1210	38 mm	10	8½"		12	<b>USE SY 221</b>
<b>SY 211</b>	Sleeve Yoke Assembly, Tata 1210, Ref O.E.M - 312 4102 108	1210	38 mm	10			86	<b>3740/-</b>
<b>SY 212</b>	Sleeve Yoke, Tata 1210, Replacement for SY 210	1210	38 mm	10	8¼"		12	<b>1710/-</b>
<b>SY 213</b>	Sleeve Yoke Assembly, Tata 407	407	30 x 81.80	16			86	<b>2840/-</b>
<b>SY 215</b>	Sleeve Yoke, Tata 407/ 407 Turbo N/M	407	30 x 81.80	16	6½"		15	<b>1090/-</b>
<b>SY 216</b>	Sleeve Yoke, Jeep, TATA 407 Turbo	Jeep	27 x 81.80	16	6½"		16	<b>1120/-</b>
<b>SY 217</b>	Sleeve Yoke, Canter, Tata 407 Turbo Ex./ 709/909	Canter	30.17 x 106.30	16	7½"		15	<b>1290/-</b>
<b>SY 218</b>	Sleeve Yoke, Tata 407 N/M, MSL Type	DCM	30.17 x 92	16	6½"		16	<b>1310/-</b>
<b>SY 219</b>	Sleeve Yoke, Tata Ace O/M	Tata Ace	23.82	22	6¼"		16	<b>860/-</b>
<b>SY 220</b>	Sleeve Yoke, Tata Ace N/M Magic	Tata Ace Magic	22 x 55	22	6"		17	<b>860/-</b>
<b>SY 221</b>	Sleeve Yoke, 8" L/L 3516 (Thick Splines), For SY 228 - 30 Splines	SPR SPL 90	41.27 x 126	16	10"		13	<b>2460/-</b>
<b>SY 222</b>	Sleeve Yoke Assembly, L/L 2214 9" (Thick Splines)	SPR SPL 90	41.27 x 126	16			86	<b>6230/-</b>
<b>SY 223</b>	Sleeve Yoke Assembly, L/L 2214 8" (Thick Splines)	SPR SPL 90	41.27 x 126	16			86	<b>5760/-</b>
<b>SY 224</b>	Sleeve Yoke Assembly, L/L 2214 10" (Thin Splines)	SPR SPL 90	41.27 x 126	30			86	<b>6230/-</b>
<b>SY 225</b>	Sleeve Yoke Assembly, L/L 2214 8" (Thin Splines)	SPR SPL 90	41.27 x 126	30			86	<b>5760/-</b>
<b>SY 226</b>	Sleeve Yoke, 10" (Thick Splines) Tata 2515 EX, L/L 2214	SPR SPL 90	41.27 x 126	16	12"		13	<b>2930/-</b>
<b>SY 228</b>	Sleeve Yoke, 8" L/L 3516/3014/4018, Tata 1616/1613	SPR SPL 90	41.27 x 126	30	10"			<b>USE SY 221</b>
<b>SY 229</b>	Sleeve Yoke, Tata Interaxle (Thick Splines)	Tusker	34.92 x 126.20	16	14"		13	<b>3310/-</b>
<b>SY 230</b>	Sleeve Yoke Assembly, L/L 350/370	L/L 370	39.68 x 115.40	16			86	<b>4330/-</b>
<b>SY 231</b>	Sleeve Yoke, Bedford, J4/J6, 370/350	L/L 370	39.68 x 115.40	16	8"		15	<b>1710/-</b>
<b>SY 232</b>	Sleeve Yoke Assembly, L/L Tusker/ Tata 1510 TC	Tusker	34.92 x 126.20	16			86	<b>4310/-</b>
<b>SY 233</b>	Sleeve Yoke, L/L Tusker, Tata 1510 TC	Tusker	34.92 x 126.20	16	8¼"		14	<b>1860/-</b>
<b>SY 234</b>	Sleeve Yoke Assembly, L/L Taurus	Taurus	47.62 x 135	16			86	<b>6800/-</b>
<b>SY 235</b>	Sleeve Yoke, L/L Taurus, Ref O.E.M - MSL SK4 5055	Taurus	47.62 x 135	16	9½"		15	<b>2700/-</b>
<b>SY 237</b>	Sleeve Yoke, Tata 4018 Long 3118,2518 (With Rubber Cup)	4018 Patti Type	49.20 x 154.90	16	13"		15	<b>4720/-</b>
<b>SY 238</b>	Sleeve Yoke, L/L 1613 Turbo, Euro II	Tusker	34.92 x 126.20	16	9¾"		14	<b>2110/-</b>
<b>SY 239</b>	Sleeve Yoke, L/L E- Comet/ Stag	Tusker	34.92 x 126.20	16	10¾"		14	<b>2460/-</b>
<b>SY 240</b>	Rear Housing, Tata 2515 Ex, 1613, Short	RSB 325	42 x 119	20	7"	3½"	5	<b>2010/-</b>
<b>SY 240T</b>	Rear Housing, Tata 2515 Ex, 1613, Short (Cavity Type) (Teflon)	RSB 325	42 x 119	20	7"	3½"	5	<b>2460/-</b>
<b>SY 241</b>	Rear Housing, Tata 2518 Short	RSB 403	42 x 129	20	7"	4"	5	<b>2170/-</b>
<b>SY 241T</b>	Rear Housing, Tata 2518 Short (Teflon Coating)	RSB 403	42 x 129	20	7"	4"	5	<b>2880/-</b>
<b>SY 242</b>	Rear Housing, Tata 2518, Medium	RSB 403	42 x 129	20	9"	4"	5	<b>3000/-</b>
<b>SY 242T</b>	Rear Housing, Tata 2518, Medium (Teflon Coating)	RSB 403	42 x 129	20	9"	4"	5	<b>3550/-</b>
<b>SY 243</b>	Rear Housing, Tata 4018, Short	RSB 490	48 x 135	30	7¾"	4"	5	<b>2240/-</b>
<b>SY 243T</b>	Rear Housing, Tata 4018, Short (Teflon Coating)	RSB 490	48 x 135	30	7¾"	4"	5	<b>2680/-</b>
<b>SY 244</b>	Sleeve Yoke, Tata L/L Interaxle 1710 Series (With Rubber Cup)	Tusker	34.92 x 126.20	16	13½"		14	<b>4620/-</b>
<b>SY 245</b>	Rear Housing, Tata L/L 1710 Series Interaxle	SPR SPL 90	41.27 x 126	16	10"	4"	6	<b>3720/-</b>
<b>SY 245T</b>	Rear Housing, Tata L/L 1710 Series Interaxle (Teflon)	SPR SPL 90	41.27 x 126	16	10"	4"	6	<b>4140/-</b>
<b>SY 246</b>	Sleeve Yoke Assembly, Tata 407 turbo/ 709/ 909	Canter	30.17 x 106.30	16			86	<b>3280/-</b>
<b>SY 247</b>	Rear Housing, Tata 4018, Medium	RSB 490 / 585	48x135/48x152	30	9"	4"	5	<b>2680/-</b>
<b>SY 247T</b>	Rear Housing, Tata 4018, Medium (Teflon Coating)	RSB 490 / 585	48x135/48x152	30	9"	4"	5	<b>3120/-</b>
<b>SY 248</b>	Sleeve Yoke, Tata L/L Interaxle 1710 Series (With Rubber Cup)	SPR SPL 90	41.27 x 126	16	14¼"		13	<b>4030/-</b>
<b>SY 249</b>	Rear Housing, Tata 2518, Long	RSB 403	42 x 129	20	10¼"	4"	5	<b>3240/-</b>
<b>SY 249T</b>	Rear Housing, Tata 2518, Long (Teflon Coating)	RSB 403	42 x 129	20	10¼"	4"	5	<b>3740/-</b>

Part No.	Description	Series	Cross Size	No. of Spline	Length	Pipe Dia	Ref. Catalogue Page No.	M.R.P. ₹
<b>SY 250</b>	Sleeve Yoke, Tata 1109 (Converted From 26 to 16 Splines)	Tusker	34.92 x 126.20	16	9½"		14	<b>1880/-</b>
<b>SY 251</b>	Sleeve Yoke, Tata 1210 N/M, 709/909	1210	38 mm	22	8¼"		12	<b>1710/-</b>
<b>SY 252</b>	Sleeve Yoke, Tata 407 Pick up N/M, MSL Type 1480 Series	Pick up	34.92 x 106.35	16	8"		16	<b>1860/-</b>
<b>SY 253</b>	Rear Housing, Tata 2523, 2528, 3128	RSB 620	57 x 152	36	8"	4½"	7	<b>3940/-</b>
<b>SY 253T</b>	Rear Housing, Tata 2523, 2528, 3128 (Teflon Coating)	RSB 620	57 x 152	36	8"	4½"	7	<b>4340/-</b>
<b>SY 255</b>	Rear Housing, Tata 4018, Extra Long	RSB 490	48 x 135	30	10¾"	4"	6	<b>3340/-</b>
<b>SY 255T</b>	Rear Housing, Tata 4018, Extra Long (Teflon Coating)	RSB 490	48 x 135	30	10¾"	4"	6	<b>4160/-</b>
<b>SY 256</b>	Sleeve Yoke, AMW 2518, Interaxle Shaft (With Rubber Cup)	SPR SPL 90	41.27 x 126	16	12"		13	<b>4030/-</b>
<b>SY 257</b>	Rear Housing, Tata 1512 LPO	RSB 325	42 x 119	24	8"	4"	5	<b>2010/-</b>
<b>SY 257T</b>	Rear Housing, Tata 1512 LPO (Teflon Coating)	RSB 325	42 x 119	24	8"	4"	5	<b>2750/-</b>
<b>SY 258</b>	Rear Housing, Tata 4928, 4028, 3128	RSB 590	52 x 147	36	8"	4½"	6	<b>3940/-</b>
<b>SY 258T</b>	Rear Housing, Tata 4928, 4028, 3128 (Teflon Coating)	RSB 590	52 x 147	36	8"	4½"	6	<b>4340/-</b>
<b>SY 259</b>	Rear Housing, Tata 2515 Ex, Long	RSB 325	42 x 119	20	9"	3½"	5	<b>3450/-</b>
<b>SY 259T</b>	Rear Housing, Tata 2515 Ex, Long (Teflon Coating)	RSB 325	42 x 119	20	9"	3½"	5	<b>4140/-</b>
<b>SY 261</b>	Rear Housing, Tata 3138, L/L 2636, Eicher 40T	SPR 2060	59 x 167.7	40	8"	4¾"	7	<b>5800/-</b>
<b>SY 261T</b>	Rear Housing, Tata 3138, L/L 2636, Eicher 40T (Teflon)	SPR 2060	59 x 167.7	40	8"	4¾"	7	<b>6370/-</b>
<b>SY 262</b>	Sleeve Yoke, Jeep Diesel	Jeep	27 x 81.80	16	6½"		16	<b>940/-</b>
<b>SY 263</b>	Sleeve Yoke, Tata 407 N/M, MSL Type	Canter	30.17 x 106.30	16	7½"		15	<b>1410/-</b>
<b>SY 264</b>	Sleeve Yoke, Tata 407 N/M, 412	Tusker	34.92 x 126.20	16	8"		14	<b>2190/-</b>
<b>SY 265</b>	Rear Housing, Tata 4928, 4028, 3128	SPR 2040	47.62 x 135	34	7½"	4¾"	6	<b>2370/-</b>
<b>SY 265T</b>	Rear Housing, Tata 4928, 4028, 3128 (Teflon)	SPR 2040	47.62 x 135	34	7½"	4¾"	6	<b>3430/-</b>
<b>SY 266</b>	Sleeve Yoke, L/L DOST	L/L Dost	27 x 81.62	25	7"		17	<b>1260/-</b>
<b>SY 267</b>	Rear Housing, Tata 4928, 4028, 3128	SPR 2040	47.62 x 135	34	10½"	4" (91mm)	6	<b>2660/-</b>
<b>SY 267T</b>	Rear Housing, Tata 4928, 4028, 3128 (Teflon Coating)	SPR 2040	47.62 x 135	34	10½"	4" (91mm)	6	<b>3100/-</b>
<b>SY 268</b>	Sleeve Yoke, Tata 407 Pick up N/M, MSL Type, Long	Pick up	34.92 x 106.35	16	9"		16	<b>2240/-</b>
<b>SY 269</b>	Rear Housing, Tata 3723, 4027, 2630	SPR 2045/47	52 x 147	38	8"	4½"	7	<b>2850/-</b>
<b>SY 269T</b>	Rear Housing, Tata 3723, 4027, 2630 (Teflon Coating)	SPR 2045/47	52 x 147	38	8"	4½"	7	<b>3440/-</b>
<b>SY 270</b>	Sleeve Yoke, Tata 407 N/M, 412, 410, MSL Type	Tusker	34.92 x 126.20	16	8"		14	<b>2220/-</b>
<b>SY 271</b>	Rear Housing, Tata 1628, 2038	SPR 2055	57 x 152	38	8¼"	4½"	7	<b>4930/-</b>
<b>SY 271T</b>	Rear Housing, Tata 1628, 2038 (Teflon Coating)	SPR 2055	57 x 152	38	8¼"	4½"	7	<b>5870/-</b>
<b>SY 272</b>	Sleeve Yoke, Eicher Terra (Converted From 28 to 16 Splines)	Tusker	34.92 x 126.20	16	11½"		14	<b>2630/-</b>
<b>SY 273</b>	Sleeve Yoke, Tata Super Ace	Tata Ace Super	27 x 81.80				17	<b>1310/-</b>
<b>SY 274</b>	Rear Housing, Tata 4928, 4028, 3128 (Cavity Type)	SPR 2040	47.62 x 135	34	8½"	4" (91mm)	8	<b>2960/-</b>
<b>SY 274T</b>	Rear Housing, Tata 4928, 4028, 3128 (Teflon Coating)	SPR 2040	47.62 x 135	34	8½"	4" (91mm)	8	<b>3390/-</b>
<b>SY 275</b>	Rear Housing, Tata 4928, 4028, 3128 (Cavity Type)	SPR 2040	47.62 x 135	34	9½"	4" (91mm)	8	<b>3070/-</b>
<b>SY 275T</b>	Rear Housing, Tata 4928, 4028, 3128 (Teflon Coating)	SPR 2040	47.62 x 135	34	9½"	4" (91mm)	8	<b>3500/-</b>
<b>SY 276</b>	Sleeve Yoke, Tata 407 Pickup N/M (Converted 24 To 16 Splines)	Pick up	34.92 x 106.35	16	9¾"		16	<b>2240/-</b>
<b>SY 277</b>	Rear Housing, Tata 4928, 4028, 3128 (Cavity Type)	SPR 2040	47.62 x 135	34	7¾"	4" (91mm)	8	<b>2960/-</b>
<b>SY 277T</b>	Rear Housing, Tata 4928, 4028, 3128 (Teflon Coating)	SPR 2040	47.62 x 135	34	7¾"	4" (91mm)	8	<b>3390/-</b>
<b>SY 278</b>	Rear Housing, Tata 3723, 4027, 2630	SPR 2045/47	52 x 147	38	11"	4" (100mm)	7	<b>3930/-</b>
<b>SY 278T</b>	Rear Housing, Tata 3723, 4027, 2630 (Teflon Coating)	SPR 2045/47	52 x 147	38	11"	4" (100mm)	7	<b>4580/-</b>
<b>SY 279</b>	Rear Housing, Tata 4028, 3128	SPR 2045/47	52 x 147	38	9½"	4" (100mm)	7	<b>2960/-</b>
<b>SY 279T</b>	Rear Housing, Tata 4028, 3128 (Teflon Coating)	SPR 2045/47	52 x 147	38	9½"	4" (100mm)	7	<b>3550/-</b>
<b>SY 280</b>	Discontinued (Use SY 282)							USE SY 282
<b>SY 280T</b>	Discontinued (Use SY 282T)							USE SY 282T
<b>SY 281</b>	Rear Housing, Tata 4928, 4028, 3128 (Cavity Type)	RSB 590	52 x 147	30	8"	4"	8	<b>2850/-</b>
<b>SY 281T</b>	Rear Housing, Tata 4928, 4028, 3128 (Teflon Coating)	RSB 590	52 x 147	30	8"	4"	8	<b>3290/-</b>
<b>SY 282</b>	Rear Housing, Tata 4018 (Cavity Type)	RSB 490	48 x 135	30	9"	4"	8	<b>2980/-</b>
<b>SY 282T</b>	Rear Housing, Tata 4018 (Cavity Type)	RSB 490	48 x 135	30	9"	4"	8	<b>3390/-</b>
<b>SY 283</b>	Rear Housing, Tata 2518, Long (Cavity Type)	RSB 403	42 x 129	20	9"	4"	8	<b>3340/-</b>
<b>SY 283T</b>	Rear Housing, Tata 2518, Long (Cavity Type) (Teflon Coating)	RSB 403	42 x 129	20	9"	4"	8	<b>4070/-</b>
<b>SY 284</b>	Rear Housing, Tata 2518, (Cavity Type)	RSB 403	42 x 129	20	8"	4"	8	<b>3010/-</b>

Part No.	Description	Series	Cross Size	No. of Spline	Length	Pipe Dia	Ref. Catalogue Page No.	M.R.P. ₹
<b>SY 284T</b>	Rear Housing, Tata 2518, (Cavity Type) (Teflon Coating)	RSB 403	42 x 129	20	8"	4"	8	<b>3350/-</b>
<b>SY 285</b>	Rear Housing, Tata 2828, L/L 4928	SPR 2065	65 x 172.7	32	8"	5"	7	<b>5640/-</b>
<b>SY 285T</b>	Rear Housing, Tata 2828, L/L 4928 (Teflon Coating)	SPR 2065	65 x 172.7	32	8"	5"	7	<b>6290/-</b>
<b>SY 287</b>	Rear Housing, Tata 4928, 4028, 3128	RSB 590	52 x 147	36	9¼"	4½"	6	<b>4710/-</b>
<b>SY 287T</b>	Rear Housing, Tata 4928, 4028, 3128 (Teflon Coating)	RSB 590	52 x 147	36	9¼"	4½"	6	<b>5120/-</b>
<b>SY 288</b>	Rear Housing, Tata 4928, 4028, 3128	SPR 2040	47.62 x 135	34	9½"	4"	6	<b>3110/-</b>
<b>SY 288T</b>	Rear Housing, Tata 4928, 4028, 3128 (Teflon Coating)	SPR 2040	47.62 x 135	34	9½"	4"	6	<b>3550/-</b>
<b>SY 289</b>	Rear Housing, Tata 4928, 4028, 3128	SPR 2040	47.62 x 135	34	8½"	4"	6	<b>3070/-</b>
<b>SY 289T</b>	Rear Housing, Tata 4928, 4028, 3128 (Teflon Coating)	SPR 2040	47.62 x 135	34	8½"	4"	6	<b>3650/-</b>
<b>SY 290</b>	Rear Housing, Tata 4928, 4028, 3128	MSL 2040	47.62 x 135	16	10"	4"	6	<b>2900/-</b>
<b>SY 290T</b>	Rear Housing, Tata 4928, 4028, 3128 (Teflon Coating)	MSL 2040	47.62 x 135	16	10"	4"	6	<b>3340/-</b>
<b>SY 291</b>	Rear Housing, Tata 4928, 4028, 3128	RSB 590	52 x 147	36	10¼"	4½"	8	<b>6940/-</b>
<b>SY 291T</b>	Rear Housing, Tata 4928, 4028, 3128 (Teflon Coating)	RSB 590	52 x 147	36	10¼"	4½"	8	<b>7600/-</b>
<b>SY 292</b>	Rear Housing, Tata 4928, 4028, 3128 (Cavity Type)	RSB 590	52 x 147	30	7¼"	4"	8	<b>3930/-</b>
<b>SY 292T</b>	Rear Housing, Tata 4928, 4028, 3128 (Cavity Type) (Teflon)	RSB 590	52 x 147	30	7¼"	4"	8	<b>4580/-</b>
<b>SY 293</b>	Rear Housing, Tata 3723, 4027, 2630 (Cavity Type)	SPR 2045/47	52 x 147	38	10"	4" (100mm)	8	<b>3940/-</b>
<b>SY 293T</b>	Rear Housing, Tata 3723, 4027, 2630 (Cavity Type) (Teflon)	SPR 2045/47	52 x 147	38	10"	4" (100mm)	8	<b>4530/-</b>
<b>SY 294</b>	Sleeve Yoke, Tata L/L Interaxle 1710 Series	SPR SPL 90	41.27 x 126	16	13"		13	<b>4620/-</b>
<b>SY 295</b>	Sleeve Yoke, MSL Type (With Rubber Cup Threaded)	SPR SPL 90	41.27 x 126	16	14"		13	<b>4770/-</b>
<b>SY 296</b>	Sleeve Yoke, Tata 407 Pickup N/M, ( 22 + 2 Knock Off )	Pick up	34.92 x 106.35	22	9"		16	<b>2010/-</b>
<b>SY 299</b>	Sleeve Yoke, Canter N/M, Swaraj Mazda	Canter	30.17 x 106.30	16	9"		15	<b>1710/-</b>
<b>SY 2001</b>	Rear Housing, Tata 4018, Long	RSB 490	48 x 135	30	10"	4"	5	<b>3040/-</b>
<b>SY 2001T</b>	Rear Housing, Tata 4018, Long (Teflon Coating)	RSB 490	48 x 135	30	10"	4"	5	<b>3840/-</b>
<b>SY 2002</b>	Rear Housing, Tata 4928, 4028, 3128	RSB 590	52 X 147	30	9½"	4"	7	<b>3070/-</b>
<b>SY 2002T</b>	Rear Housing, Tata 4928, 4028, 3128 (Teflon Coating)	RSB 590	52 X 147	30	9½"	4"	7	<b>3720/-</b>
<b>SY 2003</b>	Rear Housing, VECV Volbo Bus 80.35	RSB 680	57 x 172.5	28	10½"	5"	7	<b>6570/-</b>
<b>SY 2003T</b>	Rear Housing, VECV Volbo Bus 80.35 (Teflon Coating)	RSB 680	57 x 172.5	28	10½"	5"	7	<b>7100/-</b>
<b>SY 2004</b>	Rear Housing, Bharat Benz 4228R	RSB 620	57 x 152	36	11"	4½"	7	<b>6940/-</b>
<b>SY 2004T</b>	Rear Housing, Bharat Benz 4228R (Teflon)	RSB 620	57 x 152	36	11"	4½"	7	<b>7600/-</b>
<b>SY 2005</b>	Rear Housing, TATA 4018, Medium (HD)	RSB 490	48 x 135	16	9"	4"	6	<b>2900/-</b>
<b>SY 2005T</b>	Rear Housing, TATA 4018, Medium (HD) (Teflon)	RSB 490	48 x 135	16	9"	4"	6	<b>3340/-</b>
<b>SY 2006</b>	Rear Housing, TATA 2518	SPR 2040	47.62 x 135	34	8½"	4" (91mm)	6	<b>3070/-</b>
<b>SY 2006T</b>	Rear Housing, TATA 2518 (Teflon)	SPR 2040	47.62 x 135	34	8½"	4" (91mm)	6	<b>3650/-</b>
<b>SY 2007</b>	Rear Housing, L/L 2818, MSL Design	MS L403	42 x 129	16	9"	4" (91mm)	5	<b>2740/-</b>
<b>SY 2007T</b>	Rear Housing, L/L 2818, MSL Design (Teflon Coating)	MS L403	42 x 129	16	9"	4" (91mm)	5	<b>2940/-</b>
<b>SY 2008</b>	Rear Housing, L/L 2818, MSL Design	MAL 403	42 x 129	16	7¼"	4" (91mm)	5	<b>2630/-</b>
<b>SY 2008T</b>	Rear Housing, L/L 2818, MSL Design (Teflon Coating)	MAL 403	42 x 129	16	7¼"	4" (91mm)	5	<b>2850/-</b>
<b>SY 2009</b>	Sleeve Yoke, Mahindra Maxximo	Mahindra Maxx.	27 x 81.80	16			17	<b>1270/-</b>
<b>SY 2010</b>	Rear Housing, TATA 4018	RSB 490/RSB 590	48x135/52x147	30	10"	4"	8	<b>3070/-</b>
<b>SY 2010T</b>	Rear Housing, TATA 4018 (Teflon Coating)	RSB 490/RSB 590	48x135/52x147	30	10"	4"	8	<b>3720/-</b>
<b>SY 2011</b>	<b>Rear Housing, TATA 4018</b>	<b>RSB 490</b>	<b>48 x 135</b>	<b>30</b>	<b>9"</b>	<b>4½"</b>		<b>4110/-</b>
<b>SY 2011T</b>	<b>Rear Housing, TATA 4018 (Teflon Coating)</b>	<b>RSB 490</b>	<b>48 x 135</b>	<b>30</b>	<b>9"</b>	<b>4½"</b>		<b>4630/-</b>
<b>SY 2012</b>	<b>Rear Housing, TATA 1212</b>	<b>RSB 135</b>	<b>46MM</b>	<b>24</b>	<b>8"</b>	<b>3½"</b>		<b>2370/-</b>
<b>SY 2012T</b>	<b>Rear Housing, TATA 1212 (Teflon Coating)</b>	<b>RSB 135</b>	<b>46MM</b>	<b>24</b>	<b>8"</b>	<b>3½"</b>		<b>2860/-</b>
<b>SY 2013</b>	<b>Rear Housing, TATA 3118 (Cavity Type)</b>	<b>RSB 403</b>	<b>42 x 129</b>	<b>20</b>	<b>10½"</b>	<b>4"</b>		<b>3250/-</b>
<b>SY 2013T</b>	<b>Rear Housing, TATA 3118 (Cavity Type) (Teflon)</b>	<b>RSB 403</b>	<b>42 x 129</b>	<b>20</b>	<b>10½"</b>	<b>4"</b>		<b>3850/-</b>
<b>SY 2014</b>	<b>Rear Housing, TATA 2518 (Cavity Type)</b>	<b>RSB 403</b>	<b>42 x 129</b>	<b>20</b>	<b>6½"</b>	<b>4"</b>		<b>2170/-</b>
<b>SY 2014T</b>	<b>Rear Housing, TATA 2518 (Cavity Type) (Teflon)</b>	<b>RSB 403</b>	<b>42 x 129</b>	<b>20</b>	<b>6½"</b>	<b>4"</b>		<b>2770/-</b>
<b>SY 2015</b>	<b>Sleeve Yoke, TATA XENON YODHA 4 x 2 MSL TYPE</b>	<b>JEEP</b>	<b>27 x 81.80</b>	<b>16</b>	<b>8¼"</b>			<b>1180/-</b>

Part No.	Description	Series	Cross Size	No. of Spline	Length	Pipe Dia	Ref. Catalogue Page No.	M.R.P. ₹
RT 301	Rear Teeth, Tata 1312/1612/2213/1510	1312	46 mm	16	11½"	3½"	18	2000/-
RT 302	Rear Teeth, Tata 1613 Turbo/1109	1312	46 mm	24	11½"	3½"	18	2040/-
RT 303	Rear Teeth, Tata Hywa (Converted from 28 to 16 Splines)	Tusker	34.92 x 126.20	16	11½"	3½"	20	2000/-
RT 304	Rear Teeth, Tata 1312 Long	1312	46 mm	16	13½"	3½"	18	2350/-
RT 306	Rear Teeth, 10" (Thin Splines) Tata 2515/2518	SPR SPL 90	41.27 x 126	30	10½"	4"	19	2190/-
RT 306T	Rear Teeth, 10" (Thin Splines) Tata 2515/2518 (Teflon)	SPR SPL 90	41.27 x 126	30	10½"	4"	19	2410/-
RT 307	Rear Teeth, Tata LPK 10"	SPR SPL 90	41.27 x 126	30	10½"	3½"		USE RT 308
RT 308	Rear Teeth, Tata LPK 10" (Thick Splines)	SPR SPL 90	41.27 x 126	16	10½"	3½"	19	2270/-
RT 309	Rear Teeth, Tata 4018, AMW	4018 Patti Type	49.20 x 154.90	16	10½"	4"	21	2800/-
RT 309T	Rear Teeth, Tata 4018, AMW (Teflon Coating)	4018 Patti Type	49.20 x 154.90	16	10½"	4"	21	3140/-
RT 310	Rear Teeth, Tata 1210 SE	1210	38 mm	10	9"	3"	18	1380/-
RT 311	Rear Teeth, Tata 1210	1210	38 mm	10	9"	2½"	18	1350/-
RT 312	Rear Teeth, Tata 407	407	30 X 81.80	16	6¾"	2"	22	780/-
RT 313	Rear Teeth, TATA 407 Turbo	Jeep	27 x 81.80	16	8"	2¼"	24	830/-
RT 313T	Rear Teeth, TATA 407 Turbo (Teflon)	Jeep	27 x 81.80	16	8"	2¼"	24	1100/-
RT 314	Rear Teeth, Tata 407 Turbo EX Bearing No. 88508	Canter	30.17 x 106.30	16	9"	3"	22	1340/-
RT 314T	Rear Teeth, Tata 407 Turbo EX (Teflon Coating)	Canter	30.17 x 106.30	16	9"	3"	22	1620/-
RT 315	Rear Teeth, Tata 407 Turbo N/M, Bearing No. 88507	407	30 x 81.80	16	9"	2"	22	990/-
RT 315T	Rear Teeth, Tata 407 Turbo N/M (Teflon Coating)	407	30 x 81.80	16	9"	2"	22	1230/-
RT 316	Rear Teeth, Tata 709/909 EX, Bearing No. 88508	Tusker	34.92 x 126.20	16	9¾"	3"	21	1770/-
RT 316T	Rear Teeth, Tata 709/909 EX (Teflon Coating)	Tusker	34.92 x 126.20	16	9¾"	3"	21	2100/-
RT 317	Rear Teeth, 10" (Thick Splines) Tata 2515 (Full Splines)	SPR SPL 90	41.27 x 126	16	10½"	4"	19	2190/-
RT 317T	Rear Teeth, 10" (Thick Splines) Tata 2515 (Full Splines) (Teflon)	SPR SPL 90	41.27 x 126	16	10½"	4"	19	2500/-
RT 319	Rear Teeth, Tata 407 N/M, MSL Type	DCM	30.17 x 92	16	8"	3"	22	1050/-
RT 319T	Rear Teeth, Tata 407 N/M, MSL Type (Teflon Coating)	DCM	30.17 x 92	16	8"	3"	22	1260/-
RT 320	Rear Teeth, 8" L/L 3516/3014/4018, Tata 1616	SPR SPL 90	41.27 x 126	30	9"	4"		USE RT 321
RT 321	Rear Teeth, L/L 8" (Thick Splines)	SPR SPL 90	41.27 x 126	16	9"	4"	19	2130/-
RT 322	Rear Teeth, Tata 1613	SPR SPL 90	41.27 x 126	30	9"	3½"		USE RT 323
RT 323	Rear Teeth, Tata 1613 (Thick Splines)	SPR SPL 90	41.27 x 126	16	9"	3½"	19	2120/-
RT 324	Rear Teeth, L/L Tusker, Full Splines	Tusker L/L350/L370	39.68 x 115.40	16	8"	3"	20	1290/-
RT 324T	Rear Teeth, L/L Tusker, Full Splines (Teflon Coating)	Tusker L/L350/L370	34.92x126.20 / 39.68x115.40	16	8"	3"	20	1570/-
RT 326	Rear Teeth, L/L Tusker, Full Splines	Tusker L/L350/L370	34.92x126.20 / 39.68x115.40	16	8"	3½"	20	1390/-
RT 326T	Rear Teeth, L/L Tusker, Full Splines (Teflon Coating)	Tusker L/L350/L370	34.92x126.20 / 39.68x115.40	16	8"	3½"	20	1690/-
RT 329	Rear Teeth, Tata 407/1210 Converted	1210	38 mm	10	8¼"	2"	18	1350/-
RT 330	Rear Teeth, Eicher Canter (New Model, Long)	Canter	30.17 x 106.30	16	8"	3"	22	1120/-
RT 330T	Rear Teeth, Eicher Canter (New Model, Long) (Teflon)	Canter	30.17 x 106.30	16	8"	3"	22	1420/-
RT 331	Rear Teeth, L/L Taurus	Taurus	47.62 x 135	16	9"	3½"	22	1920/-
RT 333	Rear Teeth, Eicher Canter (Old Model, Short)	Canter	30.17 x 106.30	16	6¾"	3"	22	880/-
RT 333T	Rear Teeth, Eicher Canter (Old Model, Short) (Teflon)	Canter	30.17 x 106.30	16	6¾"	3"	22	1140/-
RT 334	Rear Teeth, L/L 1613 Turbo	Tusker	34.92 x 126.20	16	9¼"	3½"	20	1700/-
RT 334T	Rear Teeth, L/L 1613 Turbo (Teflon Coating)	Tusker	34.92 x 126.20	16	9¼"	3½"	20	2010/-
RT 335	Rear Teeth, L/L E.Comet/Stag	Tusker	34.92 x 126.20	16	10"	3½"	21	1920/-
RT 335T	Rear Teeth, L/L E.Comet/Stag (Teflon Coating)	Tusker	34.92 x 126.20	16	10"	3½"	21	2220/-
RT 336	Rear Teeth, Tata L/L Interaxle 1710 Series (Long Splines)	SPR SPL 90 / TUSKER/ 4018 PATTI TYPE	41.27x126 / 34.92x126.20 / 49.20x154.90	16	12"	4"	19	3450/-
RT 336T	Rear Teeth, Tata L/L Interaxle 1710 Series (Teflon)	SPR SPL 90 / TUSKER/ 4018 PATTI TYPE	41.27x126 / 34.92x126.20 / 49.20x154.90	16	12"	4"	19	3780/-
RT 337	Long Fork, Tata 1613,1615,2515 EX, Short	RSB 325	42 x 119	20	12½"		1	3450/-
RT 338	Long Fork, Tata 2518 Medium	RSB 403	42 x 129	20	14½"		1	4240/-
RT 339	Long Fork, Tata 2518 Short Ref O.E.M : 2171 4112 5107	RSB 403	42 x 129	20	13½"		1	3660/-
RT 340	Long Fork, Tata 4018 Short Ref O.E.M : 2167 4112 5103	RSB 490	48 x 135	30	13"		1	3500/-
RT 341	Long Fork, Tata 4018 Medium Ref O.E.M : 5011 4112 0108	RSB 490	48 x 135	30	14½"		1	3670/-
RT 342	Rear Teeth, Tata Interaxle, 3118 (Thick Splines)	Tusker	34.92 x 126.20	16	12½"	3½"	20	2420/-
RT 343	Long Fork, Tata 2516, 2515 Long	RSB 325	42 x 119	20	15¾"		1	4350/-

Part No.	Description	Series	Cross Size	No. of Spline	Length	Pipe Dia	Ref. Catalogue Page No.	M.R.P. ₹
<b>RT 344</b>	Rear Teeth, Tata 1109 (Converted From 26 To 16 Splines)	Tusker	34.92 x 126.20	16	10¾"	3½"	21	<b>1490/-</b>
<b>RT 344T</b>	Rear Teeth, Tata 1109 (Converted From 26 To 16 Splines) (Teflon)	Tusker	34.92 x 126.20	16	10¾"	2½"	21	<b>1830/-</b>
<b>RT 345</b>	Rear Teeth, Tata 1210 N/M, Bearing No. 88510	1210	38 mm	22	10"	2½"	18	<b>1570/-</b>
<b>RT 346</b>	Rear Teeth, Tata 407 Pickup 1480 Series	Pick up	34.92 x 106.35	16	8"	3½"	23	<b>1610/-</b>
<b>RT 346T</b>	Rear Teeth, Tata 407 Pickup 1480 Series (Teflon Coating)	Pick up	34.92 x 106.35	16	8"	3½"	23	<b>1900/-</b>
<b>RT 347</b>	Long Fork With Dust Cover, Tata 1613,1615	RSB 325	42 x 119	20	12½"		1	<b>4080/-</b>
<b>RT 348</b>	Long Fork With Dust Cover, Tata 2518 Medium	RSB 403	42 x 129	20	14½"		1	<b>4730/-</b>
<b>RT 349</b>	Long Fork With Dust Cover, Tata 2518 Short	SB 403	42 x 129	20	13½"		1	<b>4140/-</b>
<b>RT 350</b>	Long Fork With Dust Cover, Tata 4018 Short	RSB 490	48 x 135	30	13"		1	<b>3890/-</b>
<b>RT 351</b>	Long Fork With Dust Cover, Tata 4018 Medium	SB 490	48 x 135	30	14½"		1	<b>3940/-</b>
<b>RT 352</b>	Long Fork With Dust Cover, Tata 2516, 2515 Long	RSB 325	42 x 119	20	15¾"		1	<b>5050/-</b>
<b>RT 353</b>	Long Fork, Tata 1828,2138,L/L 3123, Eicher 40T	RSB 620	57 x 152	36	14½"		3	<b>6530/-</b>
<b>RT 354</b>	Long Fork, Tata 2518 Long	RSB 403	42 x 129	20	16"		1	<b>4390/-</b>
<b>RT 355</b>	Long Fork, Tata 2528, L/L 4928	SPR SPL 90	41.27 x 126	20	12½"		4	<b>3660/-</b>
<b>RT 356</b>	Long Fork With Dust Cover, Tata 2518 Long	RSB 403	42 x 129	20	16"		1	<b>5030/-</b>
<b>RT 357</b>	Long Fork, Tata 4018 Long	RSB 490	48 x 135	30	16"		2	<b>4730/-</b>
<b>RT 358</b>	Rear Teeth, Tata L/L Interaxle 1710 Series	SPR SPL 90	41.27 x 126	16	13"	4"	19	<b>4090/-</b>
<b>RT 358T</b>	Rear Teeth, Tata L/L Interaxle 1710 Series (Teflon)	SPR SPL 90	41.27 x 126	16	13"	4"	19	<b>4340/-</b>
<b>RT 359</b>	Long Fork, Tata LPO 1512	RSB 325	42 x 119	24	12"		1	<b>3580/-</b>
<b>RT 360</b>	Long Fork, Tata 3723, 4027, 2630	RSB 590	52 x 147	36	15"		2	<b>6130/-</b>
<b>RT 361</b>	Long Fork, Tata 3723, 4027, 2630	RSB 590	52 x 147	36	16"		2	<b>6130/-</b>
<b>RT 362</b>	Long Fork With Dust Cover, Tata 1828, 2138	RSB 620	57 x 152	36	14½"		3	<b>7010/-</b>
<b>RT 363</b>	Long Fork With Dust Cover, Tata 4018 Long	RSB 490	48 x 135	30	16"		2	<b>5260/-</b>
<b>RT 364</b>	Long Fork With Dust Cover, Tata LPO 1512	RSB 325	42 x 119	24	12"		1	<b>4410/-</b>
<b>RT 365</b>	Long Fork With Dust Cover, Tata 3723, 4027, 2630	RSB 590	52 x 147	36	15"		2	<b>7010/-</b>
<b>RT 366</b>	Long Fork With Dust Cover, Tata 3723, 4027, 2630	RSB 590	52 x 147	36	16"		2	<b>7450/-</b>
<b>RT 367</b>	Rear Teeth, Tata 407 Pickup 1480 Series	Pick up	34.92 x 106.35	16	7¾"	3"	23	<b>1610/-</b>
<b>RT 367T</b>	Rear Teeth, Tata 407 Pickup 1480 Series (Teflon)	Pick up	34.92 x 106.35	16	7¾"	3"	23	<b>1900/-</b>
<b>RT 368</b>	Long Fork, Tata 3138, L/L 2636, Eicher 40T	SPR 2060	59 x 167.7	40	13¾"		4	<b>7310/-</b>
<b>RT 369</b>	Long Fork, Tata 3723, 4027, 2630, Medium	RSB 590	52 x 147	30	14"		3	<b>4290/-</b>
<b>RT 370</b>	Rear Teeth, TATA SFC 709R BSIII, MSL Type	Tusker	34.92 x 126	16	9"	3½"	21	<b>1750/-</b>
<b>RT 370T</b>	Rear Teeth, TATA SFC 709R BSIII, MSL Type (Teflon)	Tusker	34.92 x 126	16	9"	3½"	21	<b>2060/-</b>
<b>RT 371</b>	Long Fork With Dust Cover, Tata 3138, L/L 2636	SPR 2060	59 x 167.7	40	13¾"		4	<b>8770/-</b>
<b>RT 372</b>	Rear Teeth, Tata 407 MSL Type N/M	Canter	30.17 x 106.30	16	9"	3"	23	<b>1250/-</b>
<b>RT 372T</b>	Rear Teeth, Tata 407 MSL Type N/M (Teflon Coating)	Canter	30.17 x 106.30	16	9"	3"	23	<b>1510/-</b>
<b>RT 373</b>	Long Fork With Dust Cover, Tata 3723, 4027, 2630	RSB 590	52 x 147	30	14"		3	<b>5370/-</b>
<b>RT 374</b>	Long Fork, Tata 4021, L/L 4928, 4028, 3128	SPR 2040	47.62 x 135	34	12"		2	<b>3940/-</b>
<b>RT 375</b>	Long Fork, Tata 4021, L/L 4928, 4028, 3128	SPR 2040	47.62 x 135	34	13"		2	<b>4160/-</b>
<b>RT 376</b>	Long Fork, Tata 4021, L/L 4928, 4028, 3128	SPR 2040	47.62 x 135	34	15"		2	<b>4160/-</b>
<b>RT 377</b>	Long Fork, Tata 4028, L/L 3123, Bharat Benz	SPR 2045/47	52 x 147	38	16"		3	<b>5400/-</b>
<b>RT 378</b>	Long Fork, Tata 4923, AMW 3123	SPR 2045/47	52 x 147	38	12½"		3	<b>5400/-</b>
<b>RT 379</b>	Long Fork, Tata 1628, 2038, L/L 4936	SPR 2055	57 x 152	38	13¼"		4	<b>6480/-</b>
<b>RT 380</b>	Long Fork With Dust Cover, Tata 4021, L/L 4928	SPR 2040	47.62 x 135	34	13"		2	<b>4730/-</b>
<b>RT 381</b>	Long Fork With Dust Cover, Tata 4021, L/L 4928	SPR 2040	47.62 x 135	34	15"		2	<b>4730/-</b>
<b>RT 382</b>	Long Fork With Dust Cover, Tata 4028, L/L 3123	SPR 2045/47	52 x 147	38	16"		3	<b>6570/-</b>
<b>RT 383</b>	Long Fork With Dust Cover, Tata 4923, AMW 3123	SPR 2045/47	52 x 147	38	12½"		3	<b>6310/-</b>
<b>RT 384</b>	Long Fork With Dust Cover, Tata 1628, 2038	SPR 2055	57 x 152	38	13¼"		4	<b>7530/-</b>
<b>RT 385</b>	Long Fork With Dust Cover, Tata 2528, L/L 4928	SPR SPL 90	41.27 x 126	20	12½"		4	<b>4300/-</b>
<b>RT 386</b>	Rear Teeth, Tata 407 Pickup 1480 Series, Long	Pick up	34.92 x 106.35	16	8½"	3½"	23	<b>1580/-</b>
<b>RT 386T</b>	Rear Teeth, Tata 407 Pickup 1480 Series, Long (Teflon)	Pick up	34.92 x 106.35	16	8½"	3½"	23	<b>1820/-</b>
<b>RT 387</b>	Rear Teeth, Eicher Terra (Converted From 28 to 16 Splines)	Tusker	34.92 x 126.20	16	10½"	3½"	21	<b>1980/-</b>
<b>RT 387T</b>	Rear Teeth, Eicher Terra (Converted From 28 to 16 Splines) (Teflon)	Tusker	34.92 x 126.20	16	10½"	3½"	21	<b>2260/-</b>

Part No.	Description	Series	Cross Size	No. of Spline	Length	Pipe Dia	Ref. Catalogue Page No.	M.R.P. ₹
RT 388	Long Fork	RSB 490	48 x 135	16	14½"		2	3830/-
RT 389	Long Fork With Dust Cover	RSB 490	48 x 135	16	14½"		2	4110/-
RT 390	Rear Teeth, Eicher E-2	Pickup	34.92 x 106.35	24	8¾"	2¾"	24	2080/-
RT 390T	Rear Teeth, Eicher E-2 (Teflon Coating)	Pickup	34.92 x 106.35	24	8¾"	2¾"	24	2330/-
RT 391	Rear Teeth, MSL Type (Converted From 24 to 16 Splines)	Pick up	34.92 x 106.35	16	8¾"	3½"	23	1580/-
RT 391T	Rear Teeth, MSL Type (Converted From 24 to 16 Splines) (Teflon)	Pick up	34.92 x 106.35	16	8¾"	3½"	23	1820/-
RT 392	Long Fork, Tata 3723, 4027, 2630, Short	RSB 590	52 x 147	30	13"		3	4240/-
RT 393	Long Fork, Tata 2528, L/L 4928	SPR 2065	65 x 172.7	32	14"		4	9200/-
RT 394	Long Fork With Dust Cover, Tata 3723, 4027	RSB 590	52 x 147	30	13"		3	5220/-
RT 395	Long Fork With Dust Cover, Tata 4021	SPR 2040	47.62 x 135	34	12"		2	4600/-
RT 396	Long Fork With Dust Cover, Tata 2528, L/L 4928	SPR 2065	65 x 172.7	32	14"		4	10030/-
RT 397	Long Fork, Tata 2523, L/L 4923	RSB 585	48 x 152	30	14½"		2	4850/-
RT 398	Long Fork With Dust Cover, Tata 2523, L/L 4923	RSB 585	48 x 152	30	14½"		2	5120/-
RT 399	Rear Teeth, Tata 407/410/412, MSL Type	Canter	30.17 x 106.30	16	7¼"	3½"	23	1530/-
RT 399T	Rear Teeth, Tata 407/410/412, MSL Type (Teflon)	Canter	30.17 x 106.30	16	7¼"	3½"	23	1700/-
RT 3001	Long Fork, Tata 3723, 4027, 2630, Long	RSB 590	52 x 147	30	16"		3	5480/-
RT 3002	Long Fork With Dust Cover, Tata 3723, 4027	RSB 590	52 x 147	30	16"		3	6310/-
RT 3003	Long Fork, Tata 4928, L/L 3118, 4028, MSL Type	MSL 2040	47.62 x 135	16	15"		2	4380/-
RT 3004	Long Fork With Dust Cover, Tata 4928, MSL Type	MSL 2040	47.62 x 135	16	15"		2	5040/-
RT 3005	Rear Teeth, Tata L/L Interaxle 1710 Series, MSL Type	SPR SPL 90	41.27 x 126	16	12"	4"	20	3400/-
RT 3005T	Rear Teeth, MSL Type (Teflon Coating)	SPR SPL 90	41.27 x 126	16	12"	4"	20	3810/-
RT 3006	Rear Teeth, Tata 407 Pickup 709/909	Pick up	34.92 x 106.35	24	8¾"	3½"	24	1580/-
RT 3006T	Rear Teeth, Tata 407 Pickup 709/909	Pick up	34.92 x 106.35	24	8¾"	3½"	24	1820/-
RT 3007	Rear Teeth, Tata 407 Pickup 709/909	Pick up	34.92 x 106.35	24	10½"	3½"	24	1930/-
RT 3007T	Rear Teeth, Tata 407 Pickup 709/909 (Teflon Coating)	Pick up	34.92 x 106.35	24	10½"	3½"	24	2170/-
RT 3008	Long Fork, Tata 4021, L/L 4928, 4028, 3128	SPR 2040	47.62 x 135	34	14"		2	4160/-
RT 3009	Long Fork With Dust Cover, Tata 4021, L/L 4928	SPR 2040	47.62 x 135	34	14"		2	4730/-
RT 3010	Long Fork	Pickup	34.92 x 106	16	9¼"		4	1970/-
RT 3010T	Long Fork	Pickup	34.92 x 106	16	9¼"		4	2260/-
RT 3011	Long Fork, Tata 4923, AMW 3123	SPR 2045/47	52 X 147	38	14"		3	5400/-
RT 3012	Long Fork With Dust Cover, Tata 4923, AMW 3123	SPR 2045/47	52 X 147	38	14"		3	6310/-
RT 3013	Rear Teeth With Dust Cover, 1710 Series	SPR SPL 90	41.27 X 126	16	12"	4"	20	4350/-
RT 3013T	Rear Teeth With Dust Cover, 1710 Series (Teflon)	SPR SPL 90	41.27 X 126	16	12"	4"	20	4920/-
RT 3014	Long Fork, Tata 4028,2138,L/L 3123	SPR 2045/47	52 X 147	38	15"		3	5400/-
RT 3015	Long Fork With Dust Cover, Tata 4028	SPR 2045/47	52 X 147	38	15"		3	6570/-
RT 3016	Long Fork, Tata 1628,2138,L/L 4936	SPR 2055	57 X 152	38	16"		4	8520/-
RT 3017	Long Fork With Dust Cover, Tata 1628	SPR 2055	57 X 152	38	16"		4	9830/-
RT 3018	Long Fork	SPR 2045	52 x 147	34	14"		3	4700/-
RT 3019	Long Fork With Dust Cover	SPR 2045	52 x 147	34	14"		3	5370/-
RT 3020	Long Fork	RSB 680	57 x 172.5	28	16½"		4	7230/-
RT 3021	Long Fork With Dust Cover	RSB 680	57 x 172.5	28	16½"		4	8870/-
RT 3022	Long Fork	RSB 620	57 x 152	36	17½"		3	7500/-
RT 3023	Long Fork With Dust Cover	RSB 620	57 x 152	36	17½"		3	8800/-
RT 3024	Long Fork	MSL 403	42 x 129	36	13"		1	3940/-
RT 3025	Long Fork With Dust Cover	MSL 403	42 x 129	16	13"		1	4430/-
RT 3026	Long Fork	MSL 403	42 x 129	16	11"		1	3940/-
RT 3027	Long Fork With Dust Cover	MSL 403	42 x 129	16	11"		1	4430/-
RT 3028	Rear Teeth, Jeep Diesel 9"	Jeep	27 x 81.80	16	9"		24	990/-
RT 3028T	Rear Teeth, Jeep Diesel 9" (Teflon)	Jeep	27 x 81.80	16	9"		24	1420/-
RT 3029	Rear Teeth, Jeep Diesel 6"	Jeep	27 x 81.80	16	6"	2½"	24	660/-
RT 3029T	Rear Teeth, Jeep Diesel 6" (Teflon)	Jeep	27 x 81.80	16	6"	2½"	24	1080/-
RT 3030	Rear Teeth, Jeep Diesel 7"	Jeep	27 x 81.80	16	7"	2½"	24	660/-

Part No.	Description	Series	Cross Size	No. of Spline	Length	Pipe Dia	Ref. Catalogue Page No.	M.R.P. ₹
<b>RT 3030T</b>	Rear Teeth, Jeep Diesel 7" (Teflon)	Jeep	27 x 81.80	16	7"	2½"	24	<b>1080/-</b>
<b>RT 3031</b>	Rear Teeth, Canter	Canter N/M	30.17 x 106	16	8½"	3"	23	<b>1510/-</b>
<b>RT 3031T</b>	Rear Teeth, Canter (Teflon)	Canter N/M	30.17 x 107	16	8½"	3"	23	<b>1970/-</b>
<b>RT 3032</b>	<b>Long Fork</b>	<b>RSB 135</b>	<b>46MM</b>	<b>24</b>	<b>11¼"</b>			<b>3550/-</b>
<b>RT 3033</b>	<b>Long Fork With Dust Cover</b>	<b>RSB 135</b>	<b>46MM</b>	<b>24</b>	<b>11¼"</b>			<b>4340/-</b>
<b>RT 3034</b>	<b>Rear Teeth, Tata Xenon Yodha 4 x 2 MSL TYPE</b>	<b>Jeep</b>	<b>27 x 81.80</b>	<b>16</b>	<b>9¼"</b>	<b>2¼"</b>		<b>1180/-</b>
<b>RT 3034T</b>	<b>Rear Teeth, Tata Xenon Yodha 4 x 2 MSL TYPE (Teflon)</b>	<b>Jeep</b>	<b>27 x 81.80</b>	<b>16</b>	<b>9¼"</b>	<b>2¼"</b>		<b>1470/-</b>
Part No.	Description		No. of Teeth	Length	Pipe Dia	Bearing No.	Ref. Catalogue Page No.	M.R.P. ₹
<b>FT 402</b>	Front Teeth, Tata 1312 ( 90 mm ), 2416, Ref O.E.M - 2576 4111 5104		26	8"	3½"	6211	45	<b>1740/-</b>
<b>FT 403</b>	Front Teeth, Tata 1210 SE, Ref O.E.M - 313 4111 702		14	7½"	3"	6208	44	<b>1350/-</b>
<b>FT 405</b>	Front Teeth, Tata 1210, Ref O.E.M - 313 4111 702		14	7½"	2½"	6208	44	<b>1270/-</b>
<b>FT 406</b>	Front Teeth, Tata 407		16	7"	2"	6207	44	<b>850/-</b>
<b>FT 408</b>	Front Teeth, L/L 2214 (95 mm) (With Long Thread), Ref O.E.M - P450 0933		34	6¼"	4"	88509	47	<b>1550/-</b>
<b>FT 409</b>	Front Teeth, L/L 2214 (97 mm) ( With Long Thread)		34	6¼"	4"	88509	47	<b>1550/-</b>
<b>FT 410</b>	Front Teeth, L/L Tuger 3", L/L 350/370, Ref O.E.M - P1502733		10	8"	3"	6209	44	<b>1390/-</b>
<b>FT 411</b>	Front Teeth, L/L Tusker 3½", Ref O.E.M - P1502535		10	9"	3½"	6209	44	<b>1510/-</b>
<b>FT 412</b>	Front Teeth, L/L Taurus		16	7"	3½"	6211	45	<b>1730/-</b>
<b>FT 413</b>	Discontinued (Use FT 418)							USE FT 418
<b>FT 414</b>	Front Teeth, Tata 1510 TC, L/L 1613 Turbo (Heavy Duty), Ref O.E.M - 1A217486		10	5½"	3½"	6209	44	<b>1480/-</b>
<b>FT 415</b>	Front Teeth, Tata 2515/2518/2416 N/M, Big Head		26	8"	4"	6211	45	<b>2170/-</b>
<b>FT 416</b>	Front Teeth, Tata 2518/3516, Double Step (With Long Thread)		34	6¼"	4"	6211	48	<b>1930/-</b>
<b>FT 417</b>	Front Teeth, Tata 1616, Double Step (With Long Thread)		34	6¼"	3½"	6211	48	<b>1850/-</b>
<b>FT 418</b>	Front Teeth, Eicher Canter		10	6"	3"	6208	44	<b>1480/-</b>
<b>FT 419</b>	Front Teeth, Tata 2518 RSB, Big Head, (With Long Collar) RSB 403 SERIES		26	8"	4"	6211	46	<b>2240/-</b>
<b>FT 420</b>	Front Teeth, Tata 3118, 3116,4923, Ref O.E.M - 279 000 221		16	7½"	4"	6212	45	<b>2460/-</b>
<b>FT 421</b>	Front Teeth, Tata 4018, 4923		16	7½"	4½"	6212	45	<b>2910/-</b>
<b>FT 422</b>	Front Teeth, Tata 1616 N/M ( With Long Collar) RSB 325 SERIES		26	8"	3½"	6211	46	<b>1740/-</b>
<b>FT 423</b>	Front Teeth, Tata 2518 N/M, Triple Step, RSB 490 SERIES		26	7"	4"	6013	46	<b>2190/-</b>
<b>FT 424</b>	Front Teeth, L/L 1613 Turbo		34	5½"	3½"	88509	47	<b>1580/-</b>
<b>FT 425</b>	Front Teeth, Tata 4923, 3118, RSB 620 SERIES		30	9"	4½"	6015	47	<b>3040/-</b>
<b>FT 426</b>	Front Teeth, Tata 3136, LPT 5252 (Bolt Type) SPR 2060 SERIES		26	6"	4½"	6014	49	<b>3140/-</b>
<b>FT 427</b>	Front Teeth, Tata 2518, 2523, 2528 (Bolt Type), SPR 2060 SERIES		26	6"	5"	6014	49	<b>3140/-</b>
<b>FT 428</b>	Discontinued							
<b>FT 429</b>	Front Teeth, Tata 4923, 3118, RSB 590 SERIES		26	7"	4½"	6211	46	<b>2370/-</b>
<b>FT 430</b>	Front Teeth, Tata 3128, 3123, 3721, 3718, 2523 (Bolt Type)SPR 2040 SERIES		20	6"	4½"	6211	49	<b>2810/-</b>
<b>FT 431</b>	Front Teeth, Tata 709/909, MSL Type		16	5½"	3"	6208	45	<b>1520/-</b>
<b>FT 432</b>	Front Teeth, Tata 2518 (Bolt Type )		20	6¼"	4"	6012	49	<b>2460/-</b>
<b>FT 433</b>	Front Teeth, Tata 2518 N/M, Double Step,		26	7"	4"	6013	46	<b>2190/-</b>
<b>FT 434</b>	Discontinued							
<b>FT 435</b>	Front Teeth, TATA 2518 N/M, L/L 3516		34	6¼"	3½"	88509	48	<b>1550/-</b>
<b>FT 436</b>	Front Teeth, Tata 2518		28	6"	3½"	6209	46	<b>1660/-</b>
<b>FT 437</b>	Front Teeth, Tata 3118, RSB 325 HS SERIES		28	6"	4"	6209	47	<b>1660/-</b>
<b>FT 438</b>	Front Teeth, Tata 4018, Ref O.E.M - PF700094		46	7½"	4"	6212	48	<b>2840/-</b>
<b>FT 439</b>	Front Teeth, Tata 3118, 2518 (Bolt Type ), RSB 490 SERIES		26	6"	4"	6211	49	<b>2170/-</b>
<b>FT 440</b>	Front Teeth, Tata 3118, 2518, RSB 490 SERIES		26	7"	4"	6211	46	<b>2370/-</b>
<b>FT 441</b>	Front Teeth, Swaraj Mazda		34	4¾"	3"		48	<b>2100/-</b>
<b>FT 442</b>	Front Teeth, Eicher 11.10		16	7"	3"		45	<b>2760/-</b>
<b>FT 443</b>	Discontinued (Use FT 430)							USE FT 430
<b>FT 444</b>	Discontinued							



Part No.	Description	No. of Teeth	Length	Pipe Dia	Bearing No.	Ref. Catalogue Page No.	M.R.P. ₹
<b>FT 445</b>	Front Teeth, Tata 4923, 3118 (SPICER TYPE)	30				47	<b>3940/-</b>
<b>FT 446</b>	Discontinued						
<b>FT 447</b>	Front Teeth, Tata 3723, 5252, SPR 2055 SERIES	31	6¼"	4½"	6013	47	<b>4200/-</b>
<b>FT 448</b>	Front Teeth, Tata 3723, Bharat Benz (Bolt Type ) SPR 2060 SERIES	26	6"	5¼"	6014	49	<b>3930/-</b>
<b>FT 449</b>	Front Teeth, L/L 3718, 2518 MSL Type, Ref O.E.M - PF 700154	39	6¾"	4" (91mm)	6211	48	<b>2310/-</b>
<b>FT 450</b>	Discontinued						
<b>FT 451</b>	Front Teeth, Tata Sigma 4323, 3118, 2518 Prima Bolt Type	26	6"	4½"	6211	49	<b>2560/-</b>
<b>FT 452</b>	Front Teeth, Tata 3718 MSL Type	46	7½"	4½"	88512	48	<b>3000/-</b>
Part No.	Description	Series	Cross Size	Pipe Dia	Height	Ref. Catalogue Page No.	M.R.P. ₹
<b>HY 502</b>	Half Yoke Assembly, Tata 1312 (90 mm) (Truck)	1312	46 mm	90 mm		86	<b>4340/-</b>
<b>HY 503</b>	Discontinued						
<b>HY 504</b>	Half Yoke, Tata 1312 (90 mm) (Heavy Duty Steel Forged)	1312	46 mm	3½"	5½"	37	<b>1450/-</b>
<b>HY 505</b>	Half Yoke, Tata 4018/3118 (Heavy Duty Steel Forged)	4018 Patti Type	49.20 x 154.90	4"	5½"	38	<b>2280/-</b>
<b>HY 506</b>	Half Yoke Assembly, Tata 1210 SE	1210	38 mm	3"		86	<b>3040/-</b>
<b>HY 507</b>	Half Yoke, Tata 1210 SE (Heavy Duty Steel Forged)	1210	38 mm	3"	4¾"	37	<b>1010/-</b>
<b>HY 508</b>	Half Yoke Assembly, Tata 1210	1210	38 mm	2½"		86	<b>2980/-</b>
<b>HY 509</b>	Half Yoke, Tata 1210 (Heavy Duty Steel Forged)	1210	38 mm	2½"	4¾"	37	<b>950/-</b>
<b>HY 510</b>	Half Yoke Assembly, Tata 407	407	30 x 81.80	2"		86	<b>2270/-</b>
<b>HY 511</b>	Half Yoke, Tata 407 (Heavy Duty Steel Forged)	407	30 x 81.80	2"	4"	42	<b>700/-</b>
<b>HY 512</b>	Half Yoke, Tata 407, Turbo Ex, 909, 709, Canter	Canter	30.17 x 106.30	3"	4"	42	<b>810/-</b>
<b>HY 513</b>	Half Yoke, Tata 407/1210 Converted (Heavy Duty Steel Forged)	1210	38 mm	2"	4¾"	37	<b>940/-</b>
<b>HY 514</b>	Half Yoke, TATA Ace	TATA Ace O/M	23.82	1½"	3½"	43	<b>550/-</b>
<b>HY 515</b>	Half Yoke, TATA Ace N/M Magic	TATA Ace Magic	22 x 55	1½"	2¾"	43	<b>550/-</b>
<b>HY 516</b>	Half Yoke, Tata 407, 410,412, Turbo Ex, MSL TYPE	Tusker	34.92 x 126.20	3"	4"	38	<b>1280/-</b>
<b>HY 520</b>	Half Yoke Assembly, L/L 350/370 3"	L/L 370	39.68 x 115.40	3"		86	<b>3950/-</b>
<b>HY 521</b>	Half Yoke Assembly, L/L 350/370 3½"	L/L 370	39.68 x 115.40	3½"		86	<b>4030/-</b>
<b>HY 522</b>	Half Yoke, L/L 350/370 Bedford J4/J6	L/L 370	39.68 x 115.40	3"	4¾"	38	<b>1330/-</b>
<b>HY 523</b>	Half Yoke, L/L 350/370 Bedford	L/L 370	39.68 x 115.40	3½"	5"	38	<b>1410/-</b>
<b>HY 524</b>	Half Yoke Assembly, L/L Tusker 3"	Tusker	34.92 x 126.20	3"		86	<b>3740/-</b>
<b>HY 525</b>	Half Yoke Assembly, L/L Tusker 3½"	Tusker	34.92 x 126.20	3½"		86	<b>3800/-</b>
<b>HY 526</b>	Half Yoke, L/L Tusker 3" (Heavy Duty Steel Forged)	Tusker	34.92 x 126.20	3"	4¼"	38	<b>1290/-</b>
<b>HY 527</b>	Half Yoke, L/L Tusker 3½" (Heavy Duty Steel Forged)	Tusker	34.92 x 126.20	3½"	4¼"	38	<b>1350/-</b>
<b>HY 528</b>	Half Yoke Assembly, L/L Taurus	Taurus	47.62 x 135	3½"		86	<b>5960/-</b>
<b>HY 529</b>	Half Yoke, L/L Taurus (Heavy Duty Steel Forged)	SPR 2040	47.62 x 135	3½"	6"	40	<b>1860/-</b>
<b>HY 533</b>	Half Yoke, L/L 1613 Turbo, E.Comet/ Stag	Tusker	34.92 x 126.20	3½"	4¼"	39	<b>1350/-</b>
<b>HY 536</b>	Half Yoke, Tata 2515 Ex, 1613 Turbo	RSB 325	42 x 119	3½"	5"	39	<b>1460/-</b>
<b>HY 539</b>	Half Yoke, Tata LPK 2516, 1615 (Heavy Duty Steel Forged)	SPR SPL 90	41.27 x 126	3½"	5"	37	<b>1980/-</b>
<b>HY 540</b>	Half Yoke, Tata 2518	RSB 403	42 x 129	4"	5"	39	<b>1860/-</b>
<b>HY 541</b>	Half Yoke, Tata 4018, 3118	RSB 490	48 x 135	4"	5"	40	<b>1760/-</b>
<b>HY 542</b>	Half Yoke, Tata L/L Interaxle 1710 Series	Tusker	34.92 x 126.20	4"	4¼"	39	<b>1920/-</b>
<b>HY 543</b>	Half Yoke, Tata 407 MSL	DCM	30.17 x 92	3"	3½"	42	<b>840/-</b>
<b>HY 544</b>	Half Yoke, Tata 2515 Ex (Heavy Duty Steel Forged)	RSB 325	42 x 119	4"	5½"	39	<b>1710/-</b>
<b>HY 545</b>	Half Yoke, L/L 2214 (97 mm) (Heavy Duty Steel Forged)	SPR SPL 90	41.27 x 126	4"	5"	37	<b>1970/-</b>
<b>HY 546</b>	Half Yoke, L/L 2214 (95 mm)	SPR SPL 90	41.27 x 126	4"	5"	37	<b>1920/-</b>
<b>HY 547</b>	Half Yoke, Tata 407 Pickup, MSL Type, 1480 Series	Pick up	34.92 x 106.35	3"	4"	42	<b>1110/-</b>
<b>HY 548</b>	Half Yoke, Tata 407 Pickup, MSL Type, 1480 Series	Pick up	34.92 x 106.35	3½"	3½"	42	<b>1110/-</b>
<b>HY 549</b>	Discontinued (Use HY 559)						
<b>HY 550</b>	Half Yoke, AMW, Tata 4923, 3723, 2523 AMW	RSB 620	57 x 152	4½"	6¼"	41	<b>3290/-</b>
<b>HY 551</b>	Half Yoke, Tata 2518 Interaxle (Long)	RSB 403	42 x 129	4"	5½"	39	<b>2190/-</b>

Part No.	Description	Series	Cross Size	Pipe Dia	Height	Ref. Catalogue Page No.	M.R.P. ₹
HY 552	Half Yoke, Tata 1616 N/M (Heavy Duty Steel Forged)	RSB 403	42 x 129	3½"	5"	39	2230/-
HY 554	Half Yoke, L/L 2214, N/M Extra Long	SPR SPL 90	41.27 x 126	4"	5½"	38	2300/-
HY 555	Discontinued (Use HY 536)						USE HY 536
HY 556	Half Yoke, Tata 4018 (Long) (Heavy Duty Steel Forged)	RSB 490	48 x 135	4"	5¾"	40	1870/-
HY 557	Half Yoke, Ambassador	Ambasaddor	23.82 x 61.30	2¼"	2½"	42	560/-
HY 558	Half Yoke, Tata 4928, 3138 L/L 3119N	SPR 2040	47.62 x 135	4" (91mm)	6"	40	2280/-
HY 559	Half Yoke, Tata 4028, 3128, L/L 3123	SPR 2045/47	52 x 147	4½"	6"	41	2560/-
HY 560	Half Yoke, Tata 1828, 2138, Eicher 25T	SPR 2045/47	52 x 147	4" (100mm)	6¼"	41	3150/-
HY 561	Discontinued (Use HY 550)						USE HY 550
HY 562	Half Yoke, Tata 3138, 2636, Eicher 40T	SPR 2060	59 x 167.7	4¾"	6¼"	41	4180/-
HY 563	Half Yoke, Jeep Diesel	Jeep Diesel	27 x 81.80	2½"	3¼"	43	570/-
HY 564	Half Yoke, Tata 4928, 3138 L/L 3119N	SPR 2040	47.62 x 135	4½"	5½"	40	2630/-
HY 565	Half Yoke, Tata 4923, 2528 (Heavy Duty Steel Forged)	RSB 590	52 x 147	4"	6"	41	2560/-
HY 566	Half Yoke, Tata 2523, L/L 4923	RSB 585	48 x 152	4"	6¼"	40	2340/-
HY 567	Half Yoke, Tata 2528, L/L 4928	SPR 2065	65 x 172.7	5"	7"	42	5230/-
HY 568	Half Yoke, Tata 4928, 3138 L/L 3119N	SPR 2040	47.62 x 135	4"	6"	41	2280/-
HY 569	Half Yoke, Tata L/L Interaxle 1710 Series (Extra Long)	Tusker	34.92 x 126.20	4"	5"	39	1930/-
HY 571	Half Yoke, Jeep Petrol	Jeep Petrol	27 x 81.80	1½"	3½"	43	570/-
HY 572	Half Yoke, Jeep Maxx.	Jeep Maxx.	27 x 81.80	2¾"	3"	43	780/-
HY 573	Half Yoke, L/L Dost	L/L Dost TATA	27 x 81.62	1¾"	3¼"	43	780/-
HY 574	Half Yoke, TATA Super Ace	Super Ace	27 x 81.80	2½"	2¾"	43	780/-
HY 575	Half Yoke, Mahindra Maxximo	Mahindra Maxx.	27 x 81.80	2¼"	3¼"	43	740/-
HY 576	Half Yoke, Jeep Scorpio 2W & 4W Maxxi Truck	Jeep Scorpio	27 x 81.80	2½"		43	780/-
HY 577	Half Yoke, Volvo 80.37	RSB 680	57 x 172.5	5"	7"	41	3940/-
HY 578	Half Yoke, Tata 2518, Interaxle MSL Type	MSL 403	42 x 129	4" (91mm)	5"	40	1970/-
HY 579	<b>Half Yoke</b>	<b>RSB 490</b>	<b>48 x 135</b>	<b>4½"</b>	<b>5½"</b>		<b>2270/-</b>

Part No.	Description	Series	Cross Size	Plate Dia	No. of Holes	Bolt Size	Height	Type	Ref. Catalogue Page No.	M.R.P. ₹
CH 601	Cross Holder, Tata 1312/1612/	1312	46 mm	5"	8	17 No.	4¼"	Round	30	1340/-
CH 602	Cross Holder, Tata 1312 N/M, Tipper	1312	46 mm	5"	6	17 No.	4¼"	Round	30	1340/-
CH 603	Cross Holder, Tata 2515 TC, L/L	Tusker	34.92 x 126.20		4	21 No.	4¼"	Square	35	1650/-
CH 604	Cross Holder, Tata 2515 EX (Big Nut)	SPR SPL 90	41.27 x 126	5"	8	17 No.	4¼"	Round	30	1570/-
CH 605	Cross Holder, Tata 2518/1616/1625/	SPR SPL 90	41.27 x 126	6"	8	19 No.	4¼"	Round	30	1920/-
CH 606	Cross Holder, Tata 4018	4018 Patti Type	49.20 x 154.90	6½"	8	24 No.	5"	Round	31	2520/-
CH 607	Cross Holder, Tata 1210	1210	38 mm	5"	6	17 No.	3½"	Round	31	880/-
CH 608	Cross Holder, Tata 1210 N/M	1210	38 mm	5"	8	17 No.	3½"	Round	31	1110/-
CH 609	Cross Holder, Tata 407	407	30 x 81.80	4"	6	13 No.	2¾"	Round	33	700/-
CH 610	Cross Holder, Tata 407 Turbo, 410	Canter	30.17 x 106.30	5"	6	17 No.	3½"	Round	34	940/-
CH 611	Cross Holder, L/L 2214/3516/2516/	SPR SPL 90	41.27 x 126	7"	8	15 No.	4¼"	Round	30	1750/-
CH 612	Cross Holder, L/L 350/370 Bedford	L/L 370	39.68 x 115.40	6"	4	21 No.	4"	Round	33	1270/-
CH 613	Cross Holder, L/L Tusker	Tusker	34.92 x 126.20		4	21 No.	3¼"	Square	35	1140/-
CH 614	Cross Holder, L/L Taurus	SPR 2040	47.62 x 135	7"	8	15 No.	4¼"	Round	33	1990/-
CH 615	Cross Holder, Tata 1312 N/M, 2518 LPK	1312	46 mm	6"	8	19 No.	4¾"	Round	30	1810/-
CH 616	Cross Holder, Tata 2515 EX (Big Nut)	RSB 325	42 x 119	5"	8	17 No.	4¼"	Round	32	1570/-
CH 618	Cross Holder, Tata 2518	RSB 403	42 x 129	6½"	8	24 No.	5"	Round	32	2170/-
CH 619	Cross Holder, Tata 4018	RSB 490	48 x 135	6"	4	19 No.	4¾"	Serrated	27	2010/-
CH 620	Discontinued									
CH 621	Cross Holder, Tata 3118/2521, L/L 3116/1616	SPR SPL 90	41.27 x 126	6"	4	19 No.	4"	Serrated	25	2120/-
CH 622	Cross Holder, Tata 2518 (Long)	RSB 403	42 x 129	6"	4	19 No.	5"	Serrated	26	2010/-
CH 623	Cross Holder, Tata 407 Turbo N/M, MSL Type	DCM	30.17 x 92	4"	6	13 No.	2¾"	Round	33	940/-

Part No.	Description	Series	Cross Size	Plate Dia	No. of Holes	Bolt Size	Height	Type	Ref. Catalogue Page No.	M.R.P. ₹
CH 624	Cross Holder, TATA Ace	TATA Ace	23.82		4	13 No.	2½"	Square	35	550/-
CH 625	Cross Holder, TATA Ace N/M Magic	TATA Ace N/M	22 x 55		4	13 No.	2½"	Square	35	550/-
CH 626	Cross Holder, Tata 2518 N/M	RSB 325	42 x 119	6"	8	19 No.	4¼"	Round	32	1790/-
CH 627	Cross Holder, Tata 2515 TC, N/M	SPR SPL 90	41.27 x 126		4	21 No.	4¼"	Square	35	1670/-
CH 628	Cross Holder, Canter	Canter	30.17 x 106.30		4	13 No.	2¾"	Square	35	860/-
CH 629	Cross Holder, Tata 4018 (Long )	RSB 490	48 x 135	6"	4	19 No.	5½"	Serrated	27	2500/-
CH 630	Cross Holder, Tata 3118/1618/2518,	4018 Patti Type	49.20 x 154.90	6"	4	19 No.	4¼"	Serrated	25	2410/-
CH 631	Cross Holder, Tata 1623/1625/1628	4018 Patti Type	49.20 x 154.90	7"	4	22 No.	4¼"	Serrated	26	2850/-
CH 632	Cross Holder, Tata 2515 EX	RSB 325	42 x 119	5"	4	18 No.	4¼"	Serrated	26	1970/-
CH 633	Cross Holder,AMW 2518/Eicher 40.25	4018 Patti Type	49.20 x 154.90	8"	12	19 No.	4¼"	Round	31	3030/-
CH 634	Cross Holder, Tata 1623/1628 (Long)	RSB 490	48 x 135	7"	4	22 No.	5"	Serrated	27	3020/-
CH 635	Cross Holder, Tata 1109	Tusker	34.92 x 126.20	5"	8	17 No.	4¼"	Round	31	1380/-
CH 636	Cross Holder, Tata 407 Pickup MSL	Pick up	34.92 x 106.35	5"	6	17 No.	3½"	Round	33	940/-
CH 637	Cross Holder, Tata 2518 N/M	RSB 403	42 x 129	6"	8	19 No.	4¼"	Round	32	1920/-
CH 638	Cross Holder, Tata L/L Interaxle	Tusker	34.92 x 126.20	6"	4	19 No.	3½"	Serrated	25	1770/-
CH 639	Cross Holder, Tata 2515 EX,	RSB 325	42 x 119	6"	4	19 No.	4¼"	Serrated	26	2190/-
CH 640	Discontinued	4018 Patti Type	49.20 x 154.90	6"	4	19 No.	4¼"	Serrated		
CH 641	Discontinued (Use CH 670)									
CH 642	Cross Holder, AMW, Tata 3138 (Long)	RSB 620	57 x 152	7"	4	22 No.	5¼"	Serrated	29	3440/-
CH 643	Cross Holder, L/L 2214 N/M	RSB 403	42 x 129	7"	8	15 No.	5½"	Round	32	2150/-
CH 644	Cross Holder, Tata 3118,	SPR SPL 90	41.27 x 126	6"	4	19 No.	4¾"	Serrated	25	2260/-
CH 645	Cross Holder, Canter N/M	Canter	30.17 x 106.30	5"	4	13 No.	3"	Serrated	29	1380/-
CH 646	Discontinued									
CH 647	Cross Holder, Tata 2518 Hywa N/M	SPR SPL 90	41.27 x 126	6½"	8	24 No.	5"	Round	30	2170/-
CH 648	Cross Holder, Tata 2518 N/M	SPR SPL 90	41.27 x 126	5"	4	18 No.	4¼"	Serrated	25	1970/-
CH 650	Cross Holder, Tata 2518 (Short)	RSB 403	42 x 129	6"	4	19 No.	4¼"	Serrated	26	2140/-
CH 651	Cross Holder, Tata 2515 EX (Long)	RSB 325	42 x 119	6"	4	19 No.	4¾"	Serrated	26	2190/-
CH 652	Cross Holder, Tata 2515 EX N/M	RSB 403	42 x 129	5"	8	17 No.	4¼"	Round	32	2110/-
CH 653	Cross Holder, Tata 3138/4028	RSB 590	52 x 147	6"	4	19 No.	4¾"	Serrated	28	3310/-
CH 654	Discontinued									
CH 655	Cross Holder, Tata 407/709/909	Pick up	34.92 x 106.35	5"	4	18 No.	3½"	Serrated	29	1580/-
CH 656	Cross Holder, L/L Iveco	Tusker	34.92 x 126.20	5"	4	18 No.	3½"	Serrated	25	1770/-
CH 657	Cross Holder, Tata 412/415/709/712	Tusker	34.92 x 126.20	5"	6	17 No.	3¼"	Round	31	1380/-
CH 658	Cross Holder, Tata 1623/1628 (Short)	RSB 490	48 x 135	7"	4	22 No.	4¾"	Serrated	27	2960/-
CH 659	Cross Holder, Tata 4928, 3138	SPR 2040	47.62 x 135	6"	4	19 No.	5½"	Serrated	27	2500/-
CH 660	Cross Holder, Tata 3128, 4023	SPR 2045/47	52 x 147	6"	4	19 No.	5½"	Serrated	28	3290/-
CH 661	Cross Holder, Tata 1628, 2038	SPR 2055	57 x 152	7"	4	22 No.	5½"	Serrated	27	2140/-
CH 662	Cross Holder, Tata 3138, Man 31.28	SPR 2060	59 x 167.7	7"	4	22 No.	5½"	Serrated	29	3670/-
CH 663	Cross Holder, Tata 3118/1618/2518	4018 Patti Type	49.20 x 154.90	6"	4	19 No.	4¾"	Serrated	26	2910/-
CH 666	Discontinued									
CH 667	Cross Holder, Tata 4936, 3138	SPR 2040	47.62 X 135	6"	4	19 No.	4¾"	Serrated	27	2600/-
CH 668	Cross Holder, Tata 2523, 2538	SPR 2040	47.62 X 135	7"	4	22 No.	5"	Serrated	28	3150/-
CH 669	Cross Holder, Tata 2523, 2538	SPR 2040	47.62 x 135	7"	4	22 No.	4¼"	Serrated	28	2850/-
CH 670	Cross Holder, Tata 3128, 4023	SPR 2045/47	52 x 147	7"	4	22 No.	4¾"	Serrated	28	3500/-
CH 671	Discontinued (Use CH 660)									
CH 672	Cross Holder, Tata 2523, L/L 4923	RSB 585	48 x 152	7"	4	22 No.	5½"	Serrated	28	3500/-
CH 673	Cross Holder, Swaraj Mazda	Canter	30.17 x 106.30	5"	4	17 No.	2¼"	Round	34	1050/-
CH 674	Cross Holder, Tata 407/709/909	Pick up	34.92 x 106.35	6"	4	19 No.	4"	Serrated	29	2300/-
CH 675	Cross Holder, Tata 2528, L/L 4928	SPR 2065	65 x 172.7	7"	4	22 No.	6"	Serrated	29	4390/-
CH 676	Cross Holder, Tata, L/L, AMW	RSB 403	42 x 129	7"	4	22 No.	5"	Serrated	26	3570/-
CH 677	Cross Holder, Tata 4018	RSB 490	48 x 135	6"	8	19 No.	4¾"	Round	32	2300/-
CH 678	Discontinued (Use CH 680)									

Part No.	Description	Series	Cross Size	Plate Dia	No. of Holes	Bolt Size	Height	Type	Ref. Catalogue Page No.	M.R.P. ₹
CH 679	Cross Holder, Tata 407 Turbo, 410 Ex	DCM	30.17 x 92	5"	6	17 No.	2¾"	Round	33	930/-
CH 680	Cross Holder, Tata 2523, 3118 (LONG)	RSB 590	52 x 147	7"	4	22 No.	5½"	Serrated	29	3560/-
CH 681	Cross Holder, Tata 2528, 3132	RSB 585	48 x 152	6"	4	19 No.	5"	Serrated	28	3310/-
CH 682	Cross Holder, Ambasaaddor	Ambassador	23.82 x 61.3	3½"	4	13 No.	2"	Round	34	610/-
CH 683	Cross Holder, Tata 407 Pickup	Pick up	34.92 x 106.35		4	21 No.	2¾"	Square	35	1870/-
CH 684	Cross Holder, Tata 2515 N/M	Tusker	34.92 x 126.20	6"	8	19 No.	4¼"	Round	31	1100/-
CH 685	Cross Holder, TATA 2523/2538	SPR 2040	47.62 x 135	6"	8	19 No.	5½"	Round	33	1870/-
CH 686	Cross Holder, Eicher Canter N/M	Canter	30.17 x 106.30	4"	6	13 No.	2¾"	Round	34	1310/-
CH 687	Cross Holder, Volvo 80.35	RSB 680	57 x 172.5	7"	4	22 No.	5½"	Serrated	29	4730/-
CH 688	Cross Holder, Jeep Square	Jeep	27 x 81.80		4	15 No.	2½"	Square	36	630/-
CH 689	Cross Holder, Jeep (Round)	Jeep	27 x 81.80	3¾"	4	17 No.	2½"	Round	34	630/-
CH 690	Cross Holder, L/L Dost	L/L Dost	27 x 81.62		4	17 No.	2½"	Square	36	780/-
CH 691	Cross Holder, TATA Super Ace	TATA Super Ace	27 x 81.80		4	13 No.		Square	36	860/-
CH 692	Cross Holder, Mahindra Maxximo.	Mah. Maxximo	27 x 81.80		4	13 No.		Square	36	810/-
CH 693	Cross Holder, TATA 1616 N/M	RSB 135	46mm	5"	4	18 No.	4"	Serrated	25	1970/-

Part No.	Description	No. of Teeth	Plate Dia	No. of Holes	Bolt Size	Height	Type	Ref. Catalogue Page No.	M.R.P. ₹
CF 701	Centre Coup. Tata 2416, Ref O.E.M -2632 4111 0111	26	5"	8	17 No.	3"	Round	65	1090/-
CF 702	Centre Coup. Tata 1312/1612, Ref O.E.M - 2575 4110 0104	14	5"	8	17 No.	2½"	Round	69	780/-
CF 703	Gear Coup. Tata 1312/1612, Ref O.E.M - 2507 2620 5001	16	5"	8	17 No.	2¾"	Round	68	800/-
CF 704	Differential Coup. Tata 1312/1612, Ref O.E.M - 2576 3520 0110	26	5"	8	17 No.	2½"	Round	66	800/-
CF 705	Centre Coup. Converted Tata 2515 Ex	34	5"	8	17 No.	3"	Round	64	1140/-
CF 706	Center Coup. Tata 2516 TC	34		4	21 No.	3"	Square	71	1230/-
CF 708	Differential Coup. Converted Tata 2515/3516, Oil Seal 69.85 mm	39	5"	8	17 No.	3½"	Round	62	1390/-
CF 709	Differential Coup. Converted Tata 2515/3516, Oil Seal 76.30 mm	39	5"	8	17 No.	3½"	Round	63	1390/-
CF 710	Differential Coup. 2516 TC, Oil Seal 76.30 mm	39		4	21 No.	3½"	Square	71	1390/-
CF 712	Differential Coup. Converted Tata 2515/3516	41	5"	8	17 No.	3¾"	Round	62	1390/-
CF 713	Discontinued								
CF 715	Gear Coup. GB- 60, Tata 2515 Ex, Ref O.E.M - 2691 2620 0172	18	5"	8	17 No.	3½"	Round	67	1340/-
CF 716	Differential Coup. Tata 2518, 2516, Ref O.E.M -2732 3530 0180	26	6"	8	19 No.	2½"	Round	66	1410/-
CF 717	Gear Coup. Tata 2516, 2518, 3516, Ref O.E.M - 2691 2620 0173	18	6"	8	19 No.	2½"	Round	67	1430/-
CF 718	Gear Coup. Tata 4018, 2516, Ref O.E.M - 2691 2620 0174	18	6½"	8	24 No.	3"	Round	67	1970/-
CF 719	Differential Coup Tata 4018	41	6½"	8	24 No.	3½"	Round	62	2190/-
CF 720	Differential Coup. Tata 4018 N/M	26	6½"	8	24 No.	3"	Round	66	1820/-
CF 721	Centre Coup. GB- 40, Tata 1210 SE, Ref O.E.M - 2573 4110 0110	14	5"	6	17 No.	2½"	Round	69	680/-
CF 722	Gear Coup. GBS- 40, Ref O.E.M - 322 262 0045	16	5"	6	17 No.	2½"	Round	67	720/-
CF 723	Differential Coup. Tata 1210, Ref O.E.M -3123501245	26	5"	6	17 No.	2½"	Round	65	740/-
CF 724	Centre Coup. 709/909	10	5"	4	18 No.	2¼"	Serrated	59	1680/-
CF 725	Gear Coup. Tata 1210, Ref O.E.M - 3122 6115 1517	14	5"	6	17 No.	2½"	Round	69	680/-
CF 726	Differential Coup. Converted 407/1210	16	5"	6	17 No.	2¼"	Round	68	680/-
CF 727	Centre Coup. Tata 407 , Ref O.E.M - 2651 4110 0122	16	4"	6	13 No.	2¼"	Round	67	600/-
CF 728	Gear Coup. Tata 407, Ref O.E.M - 2515 2620 0111	16	4"	6	13 No.	2¼"	Round	67	600/-
CF 729	Differential Coup. Tata 407, Ref O.E.M - 2664 3335 0101	16	4"	6	13 No.	2¼"	Round	67	600/-
CF 730	Centre Coup. Converted 407/1210	16	5"	6	17 No.	2¼"	Round	68	680/-
CF 731	Gear Coup. Converted 407/1210	16	5"	6	17 No.	2¼"	Round	68	680/-
CF 732	Gear Coup. Tata 709, 909, CF 722 Small	16	5"	6	17 No.	2½"	Round	68	740/-
CF 733	Differential Coup. Eicher 11.10, Oil Seal 62 mm, Ref O.E.M - IA 207178	16		4	19 No.	4"	Square	72	2010/-
CF 734	Gear Coup. Eicher 10.90	14	5"	4	21 No.	2½"	Round	69	1430/-
CF 735	Centre Coup. Eicher Terra 16, HCV	34		4	19 No.	3"	Square	71	1610/-
CF 736	Centre Coup. L/L 2214, 2516, Eicher 30.15, 30.25	34	7"	8	15 No.	2½"	Round	65	1830/-

Part No.	Description	No. of Teeth	Plate Dia	No. of Holes	Bolt Size	Height	Type	Ref. Catalogue Page No.	M.R.P. ₹
CF 737	Gear Coup.Eicher 11.10, Ref O.E.M - IA 231443	18	5"	4	19 No.	2½"	Round	66	1430/-
CF 738	Gear Coup. L/L 2214, 2516, 3516, Taurus, Ref O.E.M -F14351711	28	7"	8	15 No.	2½"	Round	65	1790/-
CF 739	Differential Coup. 2516, L/L 2214, Oil Seal 71.30 mm	39	7"	8	15 No.	3½"	Round	63	2170/-
CF 740	Differential Coup. L/L 2214/2516/3516 Oil Seal 76.30 mm	39	7"	8	15 No.	3½"	Round	63	2170/-
CF 741	Differential Coup. L/L 2214, 3516, 2516	41	7"	8	15 No.	3½"	Round	62	2170/-
CF 742	Gear Coup. L/L 350/370, Tusker, Ref O.E.M - 168125B	6		4	21 No.	4"	Square	72	1210/-
CF 743	Gear Coup. L/L 350/370, Tusker, Ref O.E.M - F1431022	6	6"	4	21 No.	4"	Round	70	1370/-
CF 744	Differential Coup. L/L 350/370, Tusker	10	6"	4	21 No.	3¼"	Round	69	1460/-
CF 745	Centre Coup. L/L Tusker, Ref O.E.M - F1432011	10		4	21 No.	3"	Square	72	1060/-
CF 746	Centre Coup. 2416 N/M, Tata 2515, LPT 1613, Ref O.E.M - 2632 4110 5103	26	5"	8	17 No.	3¾"	Round	66	1430/-
CF 747	Centre Coup. L/L 3116, Eicher 35.31, Ref O.E.M - 279000207	34	6"	4	19 No.	2½"	Serrated	53	1780/-
CF 748	Centre Coup. Tata 2518, Ref O.E.M - 8854 4102 2518	34	6"	8	19 No.	3"	Round	64	1730/-
CF 749	Pinion Coup. Tata 3128, L/L 3136 (Big Bore) Oil seal 90 mm	26	7"	4	22 No.	3¼"	Serrated	57	3190/-
CF 750	Centre Coup. Tata 2518 N/M, 1613 Turbo BSIII	34	6"	4	19 No.	3"	Serrated	53	2380/-
CF 751	Centre Coup. L/L Taurus, 1616, Eicher 30.25, Ref O.E.M - F143311	16	7"	8	15 No.	3¾"	Round	69	2170/-
CF 752	Centre Coup Tata 4923 (Cut Type)	28	6"	4	19 No.	3"	Serrated	60	2150/-
CF 753	Center Coup. Tata 2518, 3718 (Cut Type)	46	6"	4	19 No.	3¼"	Serrated	60	2370/-
CF 754	Centre Coup. Tata 3127, 3128, Cut Type, Oil Seal 76.30 mm	20	6"	4	19 No.	2¾"	Serrated	61	2170/-
CF 755	Centre Coup. L/L 1613 Turbo, Eicher	10	6"	4	21 No.	2½"	Round	70	1450/-
CF 756	Gear Coup. ZF Bell Type, L/L 2516, 3516	28	7"	8	15 No.	4½"	Round	65	2460/-
CF 757	Centre Coup. Tata 1616/ 1613, 2515 Ex, Ref O.E.M -2187 4111 3701	34	5"	8	17 No.	3"	Round	64	1520/-
CF 758	Centre Coup. Tata 2518 N/M	34	6"	8	19 No.	3"	Round	64	1700/-
CF 759	Centre Coup. L/L Taurus	10	7"	4	15 No.	3¾"	Round	70	2170/-
CF 760	Centre Coup. Tata 3118, 3718, 3723, 2523, Straight Cut	30	7"	4	22 No.	4½"	Serrated	60	3060/-
CF 761	Gear Coup. Tata 2518, 1613 Turbo, Ref O.E.M - 2691 2620 0193	18	6"	4	19 No.	2½"	Serrated	58	1860/-
CF 762	Centre Coup. Tata 2518, 2516, 3118	26	6"	4	19 No.	3¼"	Serrated	55	2090/-
CF 763	Pinion Coup. Tata 2518/4018, Oil Seal 76.30 mm	39	6"	4	19 No.	3¾"	Serrated	51	2370/-
CF 764	Pinion Coup. Tata 2518/4018, Oil Seal 69.85 mm	39	6"	4	19 No.	3¾"	Serrated	52	2370/-
CF 765	Gear Coup. L/L ZF Type 2516, 3118, 3116	28	6"	4	19 No.	4"	Serrated	60	2450/-
CF 766	Gear Coup. Tata 4928, Bharat Benz	28	6"	4	19 No.	3¾"	Serrated	55	2350/-
CF 767	Pinion Coup. L/L 2516, 2518, Oil Seal 76.30	41	6"	4	19 No.	3¾"	Serrated	51	2370/-
CF 769	Centre Coup. Tata 3118, 2518, L/L 2516, Man 25T,	16	6"	4	19 No.	3"	Serrated	58	2480/-
CF 770	Pinion Coup. L/L 2516 N/M, 1616, Long	39	6"	4	21 No.	4"	Round	63	1860/-
CF 771	Pinion Coup. L/L 2516 N/M, 1613	39	6"	4	21 No.	3½"	Round	63	1670/-
CF 772	Pinion Coup. Tata 2518 (Small)	26	6"	4	19 No.	2½"	Serrated	55	1420/-
CF 773	Gear Coup. GB- 75, 2518/4018, Ref O.E.M -2715 2620 0126	26	6"	4	19 No.	4¼"	Serrated	55	2370/-
CF 774	Differential Coup. L/L 2518 Interaxle (Long), Ref O.E.M -2194 4110 5110	34	6"	4	19 No.	3¼"	Serrated	53	2110/-
CF 775	Differential Coup. Tata 4018, AMW ( Long )	39	6½"	8	24 No.	4½"	Round	63	2610/-
CF 776	Differential Coup Tata 4018, AMW	41	6½"	8	24 No.	4¼"	Round	62	2610/-
CF 777	Pinion Coup. Tata 4923, 4921, Oil Seal 76.30 mm	39	7"	4	22 No.	4½"	Serrated	52	3140/-
CF 778	Pinion Coup. Tata 4018, Oil seal 76.30mm	41	7"	4	22 No.	3½"	Serrated	51	3060/-
CF 779	Pinion Coup. Tata 4018	44	7"	4	22 No.	4½"	Serrated	50	3140/-
CF 780	Pinion Coup. Tata 4018	46	7"	4	22 No.	3½"	Serrated	50	3190/-
CF 781	Discontinued								
CF 782	Gear Coup. Tata 4018, AMW	21	7"	4	22 No.	2½"	Serrated	57	3140/-
CF 783	Gear Coup. GB 75, Tata 4923, Prima	26	7"	4	22 No.	4¼"	Serrated	56	3140/-
CF 784	Centre Coup. Tata 2516, 2518 N/M	26	6"	8	19 No.	3"	Round	66	1790/-
CF 785	Differential Coup. L/L 2214 N/M	26	7"	8	15 No.	4"	Round	66	2510/-
CF 786	Centre Coup. Tata 2518, Oil Seal 72.60 mm	26	6"	4	19 No.	4"	Serrated	56	2170/-
CF 787	Pinion Coup. Tata 4923, oil seal 69.85mm	41	7"	4	22 No.	4½"	Serrated	51	3140/-
CF 788	Centre Coup. Tata 1624, 1625, 4129, L/L 3518, Ref O.E.M-2113 5552 00504	20	7"	4	22 No.	2¾"	Serrated	58	2510/-
CF 789	Pinion Coup. Tata 3128, L/L 3136 ( Big Bore ) Oil seal 90 mm	26	6"	4	19 No.	3¼"	Serrated	56	2760/-

Part No.	Description	No. of Teeth	Plate Dia	No. of Holes	Bolt Size	Height	Type	Ref. Catalogue Page No.	M.R.P. ₹
CF 790	Pinion Coup. Tata 2518 (Small) (CF 772 Cut Type)	26	6"	4	19 No.	2½"	Serrated	60	1420/-
CF 791	Centre Coup. Tata 2518, (CF 786 cut Type)	26	6"	4	19 No.	4"	Serrated	61	2070/-
CF 792	Gear Coup. Tata 2518, 1613 Turbo (CF 761 Straight Cut Type)	18	6"	4	19 No.	2½"	Serrated	61	1860/-
CF 793	Centre Coup. Tata 2518, Oil Seal 85 mm	26	6"	4	19 No.	3¼"	Serrated	56	2560/-
CF 794	Gear Coup. GBS 1150, Tata 2523, 3723 (Big Bore) Oil Seal 80 mm	26	6"	4	19 No.	3½"	Serrated	56	2540/-
CF 795	Gear Coup. GBS 1150, Tata 2523, 3723 (Big Bore) Oil Seal 80 mm	26	7"	4	22 No.	3½"	Serrated	57	3290/-
CF 797	Gear Coup. GB- 75, 2518/4018 (CF 773 Cut Type)	26	6"	4	19 No.	4¼"	Serrated	61	2420/-
CF 798	Pinion Coup. Tata 4018 (Big Bore) Oil Seal- 80 mm	26	7"	4	22 No.	3¾"	Serrated	57	2960/-
CF 799	Centre Coup. Tata 709/909, MSL Type	16	5"	6	17 No.	2¾"	Round	68	960/-
CF 7001	Centre Coup. Tata 407 LPO	34	5"	4	18 No.	2½"	Serrated	53	1680/-
CF 7002	Centre Coup. L/L 1613, E. Comet 1512	34	6"	4	21 No.	2½"	Round	64	1670/-
CF 7003	Centre Coup Tata 1613/1616, Eicher 30.25, Oil Seal 55.75	34	5"	8	17 No.	3"	Round	64	1710/-
CF 7004	Differential Coup. Tata 2518, BSIII Long, oil seal 76.30mm	39	7"	8	15 No.	4"	Round	63	2860/-
CF 7005	Differential Coup. Tata 2515 BS III	39	6"	4	19 No.	4"	Serrated	52	2920/-
CF 7006	Differential Coup. Tata 2518, Oil Seal 76.30 mm	39	6"	4	19 No.	2¾"	Serrated	52	2450/-
CF 7007	Differential Coup. Tata 2518, Oil Seal 69.85 mm	39	6"	4	19 No.	3"	Serrated	52	2450/-
CF 7008	Gear Coup. Flange Eaton Gear 8 Speed, L/L U Truck	31	6"	4	19 No.	5¼"	Serrated	54	5120/-
CF 7009	Gear Coup. Flange Eaton Gear 9 Speed, L/L U Truck	31	7"	4	22 No.	5"	Serrated	54	5690/-
CF 7010	Differential Coupling L/L 2516, BS III	46	7"	8	15 No.	3¼"	Round	62	2860/-
CF 7011	Pinion Coup. Tata 4018, Ref O.E.M - P4303214	46	6"	4	19 No.	3½"	Serrated	50	2640/-
CF 7012	Centre Coup. Tata 2518, 3718	20	6"	4	19 No.	3"	Serrated	58	2410/-
CF 7014	Gear Coup. L/L 1616 Cargo , ZF	28		4	21 No.	3¼"	Square	71	1170/-
CF 7015	Gear Coup. GB 950 TATA 3718, 2523	28	6"	4	19 No.	2¼"	Serrated	55	2560/-
CF 7016	Gear Coup. L/L Iveco, E. Comet, 1616	28	5"	4	18 No.	3½"	Serrated	55	2350/-
CF 7017	Differential Coup. L/L 2516	10	7"	8	15 No.	3"	Round	70	2300/-
CF 7018	Centre Coup. Eicher , Canter 10.40, 10.70	10		4	21 No.	2½"	Square	72	830/-
CF 7019	Centre Coup. L/L 1613	10	6"	4	19 No.		Serrated	59	1920/-
CF 7020	Pinion Coup. L/L 2516	44	7"	8	15 No.	4¼"	Round	62	2860/-
CF 7021	Pinion Coup. Tata 2518. L/L , AMW 2518	44	6"	4	19 No.	4"	Serrated	50	2640/-
CF 7022	Pinion Coup. Tata 2518	44	6"	4	19 No.	3½"	Serrated	50	2710/-
CF 7023	Gear Coup. Tata 2518	30	6"	4	19 No.	3"	Serrated	54	2640/-
CF 7024	Gear Coup. 4018	30	7"	4	22 No.	3"	Serrated	55	3190/-
CF 7025	Gear Coup. Eicher 10.90	18		4	21 No.	4"	Square	72	1190/-
CF 7026	Gear Coup. Eicher Terra 16, Ref O.E.M - ID 307112	32	6"	4	19 No.	3½"	Serrated	54	2840/-
CF 7027	Centre Coup. Tata 3118, LPK 3718, Straight Cut	26	7"	4	22 No.	4"	Serrated	61	4060/-
CF 7028	Discontinued								
CF 7029	Differential Coup. TATA 4018 (Cut Type)	26	7"	4	15 No.	3½"	Seerrated	61	3350/-
CF 7030	Differential Coup. Eicher	16	7"	8	9½No.	4"	Round	69	2490/-
CF 7031	Discontinued								
CF 7032	Discontinued								
CF 7033	Gear Coup. 1210 N/M, GB- 40	16	5"	4	18 No.	3½"	Serrated	58	2100/-
CF 7034	Differential Coup. Volvo	61	7"	4	15 No.	3½"	Seerrated	50	3350/-
CF 7036	Gear Coup. Tata, L/L, Bharat Benz, Mahindra Navistar	38	6"	4	19 No.	3"	Serrated	53	2460/-
CF 7037	Differential Coup. Volvo	19	7"	4	15 No.	3"	Seerrated	58	3350/-
CF 7038	Gear Coup. Eicher 11.10	20		4	21 No.	4"	Square	71	1190/-
CF 7039	Gear Coup. Eicher 30.25	34	7"	8	15 No.	3¼"	Round	64	2640/-
CF 7040	Gear Coup. Eicher Terra 16, Ref O.E.M - ID 311462	34	6"	4	19 No.	3"	Serrated	54	2150/-
CF 7041	Discontinued								
CF 7042	Differential Coup. Tata 1109, Euro II, BS III	16	5"	8	17 No.	2¼"	Round	68	800/-
CF 7043	Differential Coup 2516 TC, Oil Seal 71.30	39		4	21 No.	3½"	Square	71	1440/-
CF 7044	Discontinued								
CF 7045	Discontinued								

Part No.	Description	No. of Teeth	Plate Dia	No. of Holes	Bolt Size	Height	Type	Ref. Catalogue Page No.	M.R.P. ₹
CF 7047	Discontinued								
CF 7048	Discontinued								
CF 7049	Differential Coup. Eicher 20.16 Jumbo	39		4	21 No.	3"	Square	71	1790/-
CF 7050	Discontinued								
CF 7051	Differential Coup. Eicher, Canter, LCV	14		4	21 No.	2½"	Square	72	1900/-
CF 7052	Discontinued								
CF 7053	Differential Coup. Eicher terra 16 N/M	16	6"	4	19 No.	3¾"	Serrated	59	2610/-
CF 7054	Discontinued								
CF 7055	Differential Coup. Tata 4923	26	6"	4	19 No.	4¼"	Serrated	56	3140/-
CF 7056	Differential Coup. L/L 2516 Interaxle	39	6"	4	19 No.	3¼"	Serrated	52	2230/-
CF 7057	Differential Coup. Tata 3118, Prima, Oil Seal- 85 mm	26	7"	4	22 No.	3½"	Serrated	56	3090/-
CF 7058	Pinion Coup. Tata 3128, 2528, Prima 4929	24	6"	4	19 No.	3½"	Serrated	57	2510/-
CF 7059	Differential Coup. Tata L/L, AMW 4923, 4921, Oil seal 69.85 mm	39	7"	4	22 No.	4¼"	Serrated	52	3060/-
CF 7060	Differential Coup. Tata 4923	26	7"	4	22 No.	2½"	Serrated	57	3360/-
CF 7061	Differential Coup. Tata 16 N/M	39	5"	4	11 No.	3"	Seerated	51	1680/-
CF 7062	Differential Coup. Tata 4018	46	7"	4	22 No.	2¾"	Serrated	50	3140/-
CF 7063	Discontinued								
CF 7064	Centre Coup. Tata 3118, 3718, 3723, 2523 (Cut Type)	30	7"	4	22 No.	4"	Serrated	60	4530/-
CF 7065	Centre Coup. Tata 1613, 1512, 1618	28	5"	8	17 No.	3"	Round	65	1520/-
CF 7068	Differential coup. Tata 3118, Prima, Oil Seal- 80 mm	26	7"	4	22 No.	2¾"	Serrated	57	4530/-
CF 7070	Differential Coup. 1210 N/M	16	5"	4	18 No.	2¼"	Serrated	58	1580/-
CF 7071	Gear Coup. Eicher	32	7"	8	15 No.	3½"	Round	65	3070/-
CF 7072	Discontinued (USE CF 735)								
CF 7073	Centre Coup Tata 2518	34	6"	4	19 No.		Serrated	54	2080/-
CF 7074	Discontinued (USE CF 735)								
CF 7075	Centre Coup Tata 3118, Cut type	26	7"	4	22 No.	3½"	Serrated	61	2810/-
CF 7076	Gear Coup. Tata 4928 ( Small Splines )	31	7"	4	22 No.	3¼"	Serrated	54	3220/-
CF 7077	Discontinued								
CF 7078	Discontinued								
CF 7079	Centre Coup. Tata 3718, 2518, (Cut Type), Ref O.E.M -P7D00075	39	6"	4	19 No.	3¼"	Serrated	60	2370/-
CF 7080	Discontinued								
CF 7081	Differential Coup. Tata 16 N/M	39	5"	4	11 No.	3"	Seerated	51	1900/-
CF 7082	Differential Coup. Tata 16 N/M	41	5"	4	11 No.	3"	Seerated	51	1900/-
CF 7083	Differential Coup. Tata 16 N/M	34	5"	4	11 No.	2¼"	Seerated	53	1900/-
CF 7084	Differential Coup. Tata 16 N/M	34	5"	4	11 No.	3½"	Seerated	53	2350/-
CF 7085	Coupling Tata 1616 N/M	26	5"	4	11 No.	3¾"	Seerated	59	1900/-
CF 7086	Coupling Tata 4018	44	6"	4	13 No.	3¼"	Seerated	59	2960/-
CF 7087	Coupling Tata 3018, L/I, Zf Gear	41	6"	4	13 No.	4¾"	Seerated	59	3060/-
CF 7088	Coupling Tata 3018, L/I, Zf Gear	28	7"	4	15 No.	4"	Seerated	59	3250/-
CF 7089	Coupling Tata Ultra Model Bs-6-g40	16	6¾"	4	11 No.	4¾"	Seerated	61	3370/-
CF 7090	<b>Coupling Eicher</b>	<b>30</b>	<b>7"</b>	<b>4</b>	<b>22 No.</b>	<b>3¾"</b>	<b>Seerated</b>		<b>2760/-</b>
CF 7091	<b>Coupling Tata 4018</b>	<b>30</b>	<b>7"</b>	<b>4</b>	<b>22 No.</b>	<b>3¾"</b>	<b>Seerated</b>		<b>3250/-</b>
CF 7092	<b>Coupling Tata 4018</b>	<b>44</b>	<b>7"</b>	<b>4</b>	<b>22 No.</b>	<b>3"</b>	<b>Seerated</b>		<b>3060/-</b>
CF 7093	<b>Coupling</b>	<b>49</b>	<b>7"</b>	<b>4</b>	<b>22 No.</b>	<b>3½"</b>	<b>Seerated</b>		<b>3350/-</b>
CF 7094	<b>Coupling Eaton</b>	<b>28</b>	<b>6"</b>	<b>4</b>	<b>22 No.</b>	<b>3"</b>	<b>Seerated</b>		<b>2560/-</b>
Part No.	Description							Ref. Catalogue Page No.	M.R.P. ₹
OI 805	Gear Retainer, GB 50 (With Oil Seal)							88	820/-
OI 806	Gear Retainer, GB - 60							88	580/-
OI 807	Gear Retainer, Tata 1613 Turbo (Euro II) (With Oil seal)							88	860/-
OI 808	Fly Wheel Ring, Tata 2516 Hywa, 138 Teeth							92	1230/-

Part No.	Description	Ref. Catalogue Page No.	M.R.P. ₹
<b>OI 809</b>	Fly Wheel Ring, Tata 2416, 4 Hole, 159 Teeth	92	<b>1360/-</b>
<b>OI 810</b>	Fly Wheel Ring, Tata 1612 TC Small, 159 Teeth	92	<b>1210/-</b>
<b>OI 811</b>	Fly Wheel Ring, Tata 2516 TC Big, 173 Teeth	92	<b>1230/-</b>
<b>OI 812</b>	Fly Wheel Ring, Tata TC Hole Type N/M, 127 Teeth	92	<b>1360/-</b>
<b>OI 813</b>	Fly Wheel Ring, Tata TC N/M, 146 Teeth	92	<b>1450/-</b>
<b>OI 814</b>	Fly Wheel Ring, Tata 3118 Hole Type, 138 Teeth	92	<b>1390/-</b>
<b>OI 817</b>	Fly Wheel Ring, Tata 1109 ULTRA	88	<b>990/-</b>
<b>OI 818</b>	Fly Wheel Ring, 9 Speed REF O.E.M ZF-5300 322	88	<b>2960/-</b>
<b>OI 821</b>	Fly Wheel Ring, Tata 1210 SE, Ref O.E.M - 352 032 1105, 125 Teeth	92	<b>1180/-</b>
<b>OI 824</b>	Gear Retainer, Tata 1210 SE (With Oil Seal)	88	<b>850/-</b>
<b>OI 826</b>	Stg.U.J Cross Assly. 92 Model N/M	88	<b>1090/-</b>
<b>OI 827</b>	Stg.U.J Cross Assly. Tata 1613 N/M	88	<b>1090/-</b>
<b>OI 829</b>	Stg.U.J Cross Assly. RANE TYPE	88	<b>1290/-</b>
<b>OI 834</b>	Gear Retainer, Tata 1210 (With Oil Seal)	88	<b>760/-</b>
<b>OI 836</b>	Fly Wheel Ring, Tata 1210, Ref O.E.M - 312 035 0105, 125 Teeth	92	<b>1460/-</b>
<b>OI 837</b>	Stg.U.J Cross Assly. Tata 1210	88	<b>1460/-</b>
<b>OI 841</b>	Fly Wheel Ring, Tata 407, Ref O.E.M - 2534 0311 5401, 114 Teeth	92	<b>1270/-</b>
<b>OI 842</b>	Fly Wheel Ring, Tata 608, 114 Teeth	92	<b>1410/-</b>
<b>OI 843</b>	Fly Wheel Ring, Tata 709, 114 Teeth	92	<b>1410/-</b>
<b>OI 844</b>	Stg.U.J Cross Assly. Tata 407	88	<b>940/-</b>
<b>OI 845</b>	Through Shaft, Tata 2516, Teeth - 34 x 32, Length- 15"	87	<b>2190/-</b>
<b>OI 846</b>	Through Shaft, Tata 2518, Teeth - 39 x 20, Length- 16"	87	<b>2520/-</b>
<b>OI 847</b>	Through Shaft, Meritor Type, Teeth - 26 x 35, Length-21"	87	<b>3950/-</b>
<b>OI 848</b>	Through Shaft, Spicer Type, Teeth - 39 x 34, Length - 15"	87	<b>3090/-</b>
<b>OI 852</b>	Fly Wheel Ring, L/L Plain , Ref O.E.M - 074002, 136 Teeth	92	<b>1750/-</b>
<b>OI 853</b>	Fly Wheel Ring, L/L Cut, Ref O.E.M - 074002, 136 Teeth	92	<b>1740/-</b>
<b>OI 854</b>	Fly Wheel Ring, L/L Henno 6D, 136 Teeth	92	<b>1390/-</b>
<b>OI 856</b>	Fly Wheel Ring, Tusker, Ref O.E.M - 074002, 136 Teeth	93	<b>1740/-</b>
<b>OI 857</b>	Fly Wheel Ring, Taurus, 136 Teeth	93	<b>1570/-</b>
<b>OI 858</b>	Fly Wheel Ring, L/L 680/ Double Decker, 159 Teeth	93	<b>3140/-</b>
<b>OI 860</b>	Dust Cover, RSB 325 Series, Tata 2515 Ex, 1613, Length - 5½"	11	<b>440/-</b>
<b>OI 861</b>	Dust Cover, RSB 490 / 585 / 590, SPR 2040 Series, Tata 4018, Length - 5½"	11	<b>550/-</b>
<b>OI 862</b>	Fly Wheel Ring, Eicher Pro 145T	93	<b>2820/-</b>
<b>OI 864</b>	Gear Retainer, GB - 75	88	<b>990/-</b>
<b>OI 865</b>	Dust Cover, RSB 403 Series, Tata 2518/4018, Length - 8¼"	11	<b>550/-</b>
<b>OI 866</b>	Dust Cover, RSB 490 / 585 / 590, SPR 2040 Series, Tata 4018, Length - 6¾"	11	<b>600/-</b>
<b>OI 867</b>	Through Shaft, Tata 2528 T.C. REF NO. 2739 3510 7902 Teeth 24 x 40, Length - 18"	87	<b>4600/-</b>
<b>OI 868</b>	Fly Wheel Ring, L/L Henno 4 D, 126 Teeth	93	<b>1390/-</b>
<b>OI 869</b>	Dust Cover, RSB 403 Series, Tata 2518, Length - 6¾"	11	<b>490/-</b>
<b>OI 870</b>	Fly Wheel Ring, Tata Prima, 149 Teeth	93	<b>2820/-</b>
<b>OI 871</b>	Fly Wheel Ring, Bharat Benz 1112	93	<b>1710/-</b>
<b>OI 872</b>	Welch Plug, Tata 4018, 3118, Cross - 48 x 135, Teeth 30, Length - 16½"	9	<b>5870/-</b>
<b>OI 872T</b>	Welch Plug, Tata 4018, 3118, Cross - 48 x 135, Teeth 30, Length - 16½" (Teflon Coated)	9	<b>6690/-</b>
<b>OI 873</b>	Dust Cover, Spr 2045 / 47 Series, Tata 4923, L/I 3123 Bharat Benz, Length - 8"	11	<b>1440/-</b>
<b>OI 874</b>	Dust Cover, Spr 2045 / 47 Series, Tata 4923, L/I 3123 Bharat Benz, Length - 5½"	11	<b>1310/-</b>
<b>OI 875</b>	Dust Cover, Spr 2045 / 47 Series, Tata 4028, L/I 3123 Bharat Benz, Length - 6¾"	11	<b>1390/-</b>
<b>OI 876</b>	Rear Teeth Welded with Half Yoke, Cross - 41.27 x 126, Teeth 16, Length - 17"	9	<b>6840/-</b>
<b>OI 876T</b>	Rear Teeth Welded with Half Yoke, Cross - 41.27 x 126, Teeth 16, Length - 17" (Teflon Coated)	9	<b>7170/-</b>
<b>OI 877</b>	Rear Teeth Welded with Half Yoke, Cross - 41.27 x 126, Teeth 16, Length - 17¼"	9	<b>7420/-</b>
<b>OI 877T</b>	Rear Teeth Welded with Half Yoke, Cross - 41.27 x 126, Teeth 16, Length - 17¼" (Teflon Coated)	9	<b>7750/-</b>
<b>OI 878</b>	Welch Plug, AMW 2518 Interaxle Shaft, Cross - 42 x 129, Teeth 20, Length - 14¾"	9	<b>5850/-</b>
<b>OI 878T</b>	Welch Plug, AMW 2518 Interaxle Shaft, Cross - 42 x 129, Teeth 20, Length - 14¾" (Teflon Coated)	9	<b>6400/-</b>



Part No.	Description	Ref. Catalogue Page No.	M.R.P. ₹
<b>OI 879</b>	Welch Plug, AMW 2518 Interaxle Shaft, Cross - 42 x 129, Teeth 20, Length - 15¾"	9	<b>6090/-</b>
<b>OI 879T</b>	Welch Plug, AMW 2518 Interaxle Shaft, Cross - 42 x 129, Teeth 20, Length - 15¾" (Teflon Coated)	9	<b>6590/-</b>
<b>OI 880</b>	Welch Plug, AMW 2518 Interaxle Shaft, Cross - 42 x 129, Teeth 20, Length - 12¾"	9	<b>5020/-</b>
<b>OI 880T</b>	Welch Plug, AMW 2518 Interaxle Shaft, Cross - 42 x 129, Teeth 20, Length - 12¾" (Teflon Coated)	9	<b>5730/-</b>
<b>OI 881</b>	Welch Plug, AMW 2518 Interaxle Shaft, Cross - 42 x 129, Teeth 20, Length - 14"	9	<b>5520/-</b>
<b>OI 881T</b>	Welch Plug, AMW 218 Interaxle Shaft, Cross - 42 x 129, Teeth 20, Length - 14" (Teflon Coated)	9	<b>6070/-</b>
<b>OI 882</b>	Gear Retainer, GB - 90 / 1150	88	<b>1120/-</b>
<b>OI 883</b>	Fly Wheel Ring, Tata Ultra	93	<b>2400/-</b>
<b>OI 884</b>	Dust Cover, RSB 590 / 620 Series, Tata 4028, Bharat Benz, Length - 6½"	11	<b>660/-</b>
<b>OI 885</b>	Fly Wheel Ring, Eicher Canter 1108, 124 Teeth	93	<b>1390/-</b>
<b>OI 886</b>	Fly Wheel Ring, Eicher Jumbo, 140 Teeth	93	<b>1410/-</b>
<b>OI 887</b>	Fly Wheel Ring, Mahindra Navistar, 145 Teeth	93	<b>1710/-</b>
<b>OI 888</b>	Fly Wheel Ring, Tata Nova, 158 Teeth	93	<b>2700/-</b>
<b>OI 889</b>	Welch Plug, Tata 2523, L/L 4923, Cross - 48 x 152, Teeth 30, Length - 15¾"	9	<b>5680/-</b>
<b>OI 889T</b>	Welch Plug, Tata 2523, L/L 4923, Cross - 48 x 152, Teeth 30, Length - 15¾" (Teflon Coated)	9	<b>6120/-</b>
<b>OI 890</b>	Fly Wheel Ring, Bharat Benz, 160 Teeth	93	<b>2540/-</b>
<b>OI 891</b>	Fly Wheel Ring, Bharat Benz, 146 Teeth	93	<b>2420/-</b>
<b>OI 892</b>	Gear Retainer, L/L U- Truck	88	<b>2130/-</b>
<b>OI 893</b>	Gear Retainer, Eaton	88	<b>2420/-</b>
<b>OI 894</b>	Gear Retainer, Tata 3118	88	<b>3940/-</b>
<b>OI 895</b>	Cup & Cone Assembly, 2516 Old Model, Height - 3¾"	87	<b>3170/-</b>
<b>OI 896</b>	Cup & Cone Assembly, 2518 New Model, Height - 3¼"	87	<b>3420/-</b>
<b>OI 897</b>	Welch Plug, Tata 4018, 3118, Cross - 48 X 135, Teeth 30, Length - 14¾"	9	<b>5210/-</b>
<b>OI 897T</b>	Welch Plug, Tata 4018, 3118, Cross - 48 X 135, Teeth 30, Length - 14¾" (Teflon Coated)	9	<b>5650/-</b>
<b>OI 898</b>	Welch Plug, Tata 3118, Cross - 47.62 X 135, Teeth 34, Length - 14¾"	10	<b>5750/-</b>
<b>OI 898T</b>	Welch Plug, Tata 3118, Cross - 47.62 X 135, Teeth 34, Length - 14¾" (Teflon Coated)	10	<b>6180/-</b>
<b>OI 899</b>	Cup & Cone Assembly, 3118 New Model, Height - 1¼"	87	<b>1240/-</b>
<b>OI 8001</b>	Welch Plug, Tata 3118, Cross - 47.62 X 135, Teeth 34, Length - 14"	10	<b>5640/-</b>
<b>OI 8001T</b>	Welch Plug, Tata 3118, Cross - 47.62 X 135, Teeth 34, Length - 14" (Teflon Coated)	10	<b>6070/-</b>
<b>OI 8002</b>	Welch Plug, Tata 4928, Cross - 52 X 147, Teeth 30, Length - 14"	10	<b>5940/-</b>
<b>OI 8002T</b>	Welch Plug, Tata 4928, Cross - 52 X 147, Teeth 30, Length - 14" (Teflon Coated)	10	<b>6350/-</b>
<b>OI 8003</b>	Welch Plug, Tata 4928, Cross - 52 X 147, Teeth 30, Length - 13"	10	<b>5810/-</b>
<b>OI 8003T</b>	Welch Plug, Tata 4928, Cross - 52 X 147, Teeth 30, Length - 13" (Teflon Coated)	10	<b>6250/-</b>
<b>OI 8004</b>	Welch Plug, AMW 2518 Interaxle Shaft, Cross - 42 x 129, Teeth 20, Length - 15½"	9	<b>5760/-</b>
<b>OI 8004T</b>	Welch Plug, AMW 2518 Interaxle Shaft, Cross - 42 x 129, Teeth 20, Length - 15½" (Teflon Coated)	9	<b>6260/-</b>
<b>OI 8005</b>	Welch Plug, AMW 2518 Interaxle Shaft, Cross - 42 x 129, Teeth 20, Length - 12½"	9	<b>4690/-</b>
<b>OI 8005T</b>	Welch Plug, AMW 2518 Interaxle Shaft, Cross - 42 x 129, Teeth 20, Length - 12½" (Teflon Coated)	9	<b>5400/-</b>
<b>OI 8006</b>	Welch Plug, Tata 4928, 4027, 2630, 2525, Cross - 52 X 147, Teeth 36, Length - 12¾"	10	<b>7600/-</b>
<b>OI 8006T</b>	Welch Plug, Tata 4928, 4027, 2630, 2525, Cross - 52 X 147, Teeth 36, Length - 12¾" (Teflon Coated)	10	<b>8000/-</b>
<b>OI 8007</b>	Welch Plug, Tata 4928, 4027, 2630, 2525, Cross - 52 X 147, Teeth 36, Length - 14"	10	<b>8370/-</b>
<b>OI 8007T</b>	Welch Plug, Tata 4928, 4027, 2630, 2525, Cross - 52 X 147, Teeth 36, Length - 14" (Teflon Coated)	10	<b>8780/-</b>
<b>OI 8008</b>	Welch Plug, Tata 4928, 4027, 2630, 2525, Cross - 52 X 147, Teeth 36, Length - 15"	10	<b>10600/-</b>
<b>OI 8008T</b>	Welch Plug, Tata 4928, 4027, 2630, 2525, Cross - 52 X 147, Teeth 36, Length - 15" (Teflon Coated)	10	<b>11260/-</b>
<b>OI 8009</b>	Welch Plug, Tata 4928, Bharat Benz, Man 18.28, Cross - 52 X 147, Teeth 38, Length - 13¾"	10	<b>6510/-</b>
<b>OI 8009T</b>	Welch Plug, Tata 4928, Bharat Benz, Man 18.28, Cross - 52 X 147, Teeth 38, Length - 13¾" (Teflon Coated)	10	<b>7100/-</b>
<b>OI 8010</b>	Welch Plug, Tata 4928, Bharat Benz, Man 18.28, Cross - 52 X 147, Teeth 38, Length - 17½"	10	<b>8180/-</b>
<b>OI 8010T</b>	Welch Plug, Tata 4928, Bharat Benz, Man 18.28, Cross - 52 X 147, Teeth 38, Length - 17½" (Teflon Coated)	10	<b>8830/-</b>
<b>OI 8011</b>	Welch Plug, Tata 4928, Bharat Benz, Man 18.28, Cross - 52 X 147, Teeth 38, Length - 15¾"	10	<b>7210/-</b>
<b>OI 8011T</b>	Welch Plug, Tata 4928, Bharat Benz, Man 18.28, Cross - 52 X 147, Teeth 38, Length - 15¾" (Teflon Coated)	10	<b>7800/-</b>
<b>OI 8012</b>	Welch Plug, Tata 4928, Bharat Benz, Man 18.28, Cross - 52 X 147, Teeth 38, Length - 15½"	10	<b>8190/-</b>
<b>OI 8012T</b>	Welch Plug, Tata 4928, Bharat Benz, Man 18.28, Cross - 52 X 147, Teeth 38, Length - 15½" (Teflon Coated)	10	<b>8780/-</b>
<b>OI 8013</b>	Welch Plug, Tata 4928, Bharat Benz, Man 18.28, Cross - 57 X 152, Teeth 38, Length - 14½"	10	<b>8330/-</b>

Part No.	Description	Ref. Catalogue Page No.	M.R.P. ₹
<b>OI 8013T</b>	Welch Plug, Tata 4928, Bharat Benz, Man 18.28, Cross - 57 X 152, Teeth 38, Length - 14½" (Teflon Coated)	10	<b>8730/-</b>
<b>OI 8014</b>	Welch Plug, Tata 4928, Bharat Benz, Man 18.28, Cross - 57 X 152, Teeth 38, Length - 14¾"	10	<b>9320/-</b>
<b>OI 8014T</b>	Welch Plug, Tata 4928, Bharat Benz, Man 18.28, Cross - 57 X 152, Teeth 38, Length - 14¾" (Teflon Coated)	10	<b>10260/-</b>
<b>OI 8015</b>	Dust Cover, RSB 490 / 585 / 590, SPR 2040 Series, Tata 3118, Length - 7½"	11	<b>770/-</b>
<b>OI 8056</b>	Washer Kit with Bolt for Bolt Type Fronth Teeth (RSB Type)	87	<b>520/-</b>
<b>OI 8057</b>	Washer Kit with Bolt for Bolt Type Fronth Teeth (Spicer Type)	87	<b>520/-</b>
<b>OI 8058</b>	Dust Cover, SPR 2055 Series, Tata 1628, L/L 4936 Bharat Benz, Length - 5½"	11	<b>1720/-</b>
<b>OI 8059</b>	Dust Cover, SPR 2060 Series, Tata 3138, L/L 2636 Bharat Benz, Length - 5¼"	11	<b>1720/-</b>
<b>OI 8060</b>	Dust Cover, SPR 2065 Series, Tata 3138, L/L 2636 Bharat Benz	11	<b>1720/-</b>
<b>OI 8061</b>	Welch Plug, Tata 4018, 3118, Cross - 48 x 135, Teeth 30, Length - 15¾"	9	<b>5570/-</b>
<b>OI 8061T</b>	Welch Plug, Tata 4018, 3118, Cross - 48 x 135, Teeth 30, Length - 15¾" (Teflon Coated)	9	<b>6370/-</b>
<b>OI 8062</b>	Welch Plug, Tata 4018, 3118, Cross - 48 x 135, Teeth 30, Length - 14¼"	9	<b>5250/-</b>
<b>OI 8062T</b>	Welch Plug, Tata 4018, 3118, Cross - 48 x 135, Teeth 30, Length - 14¼" (Teflon Coated)	9	<b>5660/-</b>
<b>OI 8063</b>	Dust Cover, RSB 680, PIPE OD - 95 mm, Length 6¼"	11	<b>1100/-</b>

Part No.	Description	Plate Dia	Series	Cross Size	Length	Ref. Catalogue Page No.	M.R.P. ₹
<b>OI 8065</b>	Interaxle Shaft Assly. Tata 4018	6"	RSB 490	48 x 135	26¼"	84	<b>20200/-</b>
<b>OI 8066</b>	Interaxle Shaft Assly. Tata 2518		L/L TUSKER	34.92 x 126.2	27"	84	<b>19020/-</b>
<b>OI 8067</b>	Interaxle Shaft Assly. Tata 2518		L/L TUSKER	34.92 x 126.2	27"	84	<b>19020/-</b>
<b>OI 8068</b>	Interaxle Shaft Assly. Tata 2518	6"	RSB 403	42 x 129	27"	84	<b>18230/-</b>
<b>OI 8069</b>	Interaxle Shaft Assly. Tata 2518 AMW	6"	L/L 2214 SPL 90	41.27 x 126	24"	84	<b>20890/-</b>
<b>OI 8070</b>	Interaxle Shaft Assly. Tata 2518 AMW	6"	RSB 403	42 x 129	27"	84	<b>18230/-</b>
<b>OI 8071</b>	Interaxle Shaft Assly. Tata 2523	6"	RSB 490	48 x 135	27"	84	<b>20200/-</b>
<b>OI 8072</b>	Interaxle Shaft Assly. Tata 2523	6"	RSB 490	48 x 135	24"	84	<b>23920/-</b>
<b>OI 8073</b>	Interaxle Shaft Assly. Tata 3118 Prima	6"	SPR 2040	47.68 x 135	29"	84	<b>23500/-</b>
<b>OI 8074</b>	Interaxle Shaft Assly. Tata 3118 Prima (With Water Proof Cross)	6"	SPR 2040	47.68 x 135	24"	84	<b>25070/-</b>
<b>OI 8075</b>	Interaxle Shaft Assly. Tata 3118 Prima	6"	SPR 2040	47.68 x 135	24"	84	<b>23500/-</b>
<b>OI 8076</b>	Interaxle Shaft Assly. Tata Lpk 2523	7"	RSB 490	48 x 135	24"	84	<b>19220/-</b>
<b>OI 8077</b>	Interaxle Shaft Assly. Tata 2516	6"	SRSB 403	42 x 129	29"	84	<b>19220/-</b>
<b>OI 8078</b>	Interaxle Shaft Assly. Tata 2518	6"	L/L 2214 SPL 90	41.27 x 126	27"	85	<b>20890/-</b>
<b>OI 8079</b>	Interaxle Shaft Assly. Tata 2515, AMW	6"	RSB 403	42 x 129	23"	85	<b>16260/-</b>
<b>OI 8080</b>	Interaxle Shaft Assly. Tata 2515, Mahindra Navistar	6"	L/L 2214 SPL 90	41.27 x 126	23"	85	<b>21310/-</b>
<b>OI 8081</b>	Interaxle Shaft Assly. Tata 3118	6"	RSB 590	52 x 147	24"	85	<b>25500/-</b>
<b>OI 8082</b>	Interaxle Shaft Assly. Tata 3118 (With Water Proof Cross)	6"	RSB 590	52 x 147	24"	85	<b>27000/-</b>
<b>OI 8083</b>	Interaxle Shaft Assly. JCB 3DX	6"	JCB	34.92 x 106	12½"	85	<b>7160/-</b>
<b>OI 8084</b>	Interaxle Shaft Assly. Tata 3118 (With Water Proof Cross)	6"	RSB 490	48 x 135	26"	85	<b>22620/-</b>
<b>OI 8085</b>	Interaxle Shaft Assly. Tata 3118	6"	RSB 490	48 x 135	27"	85	<b>22620/-</b>
<b>OI 8086</b>	Interaxle Shaft Assly. Tata 3118	6"	RSB 490	48 x 135	29½"	85	<b>22620/-</b>
<b>OI 8087</b>	Interaxle Shaft Assly. Tata 2523	6"	RSB 490	48 x 135	24"	85	<b>20200/-</b>
<b>OI 8088</b>	Interaxle Shaft Assly. Tata 2518	6"	RSB 403	42 x 129	24"	85	<b>19220/-</b>
<b>OI 8089</b>	Interaxle Shaft Assly. L/L U- Truck	6"	L/L 2214 SPL 90	41.27 x 126	28"	85	<b>20120/-</b>
<b>OI 8090</b>	Interaxle Shaft Assly. L/L U- Truck	6"	L/L 2214 SPL 90	41.27 x 126	27½"	85	<b>20120/-</b>

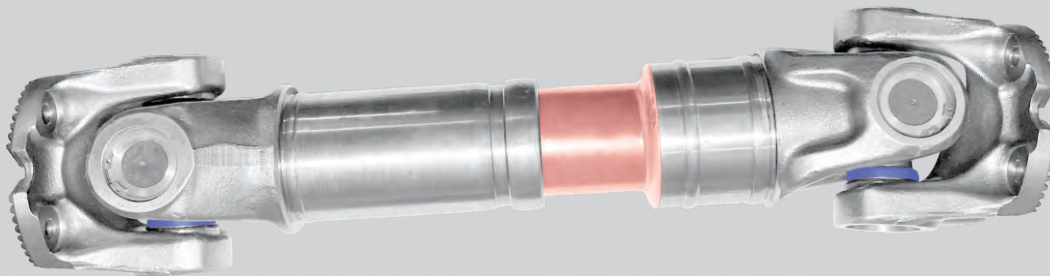
Part No.	Description	Series & Cross	Plate Dia Inch/mm	Length Inch / mm	Original Part No.	M.R.P. ₹
<b>OI 8101</b>	Interaxle Shaft Assly. AMW 2518 TP 4300 WB BS-III 6x4	RSB 403	6"	23"	INA403I06 /	279-02-0191
<b>OI 8101T</b>	Interaxle Shaft Assly. AMW 2518 TP 4300 WB BS-III (Teflon)	(42x129)	(150mm)	(585mm)	A140403333414000586	
<b>OI 8102</b>	Interaxle Shaft Assly. Tata Lpk 2518 38 WB	RSB 403	6"	26"	INA403001 /	216741120104
<b>OI 8102T</b>	Interaxle Shaft Assly. Tata Lpk 2518 38 WB (Teflon Coated)	(42x129)	(150mm)	(663mm)	A140403330416630050	
<b>OI 8103</b>	Interaxle Shaft Assly. Tata Lps 4923	RSB 490	7"	22"	INA490003 /	501141120107
<b>OI 8103TG</b>	Interaxle Shaft Assly. Tata Lps 4923 (Teflon) (With Waterproof Cross)	(48x135)	(180mm)	(565mm)	A140490342425000656	

Part No.	Description	Series & Cross	Plate Dia Inch/mm	Length Inch / mm	Original Part No.		M.R.P. ₹
<b>OI 8104</b>	Interaxle Shaft Assly. Tata Lps 4923	RSB 490	7"	23"	INA490004 /	501141120111	<b>19120/-</b>
<b>OI 8104TG</b>	Interaxle Shaft Assly. Tata Lps 4923 (Teflon) (With Waterproof Cross)	(48x135)	(180mm)	(600mm)	A140490342434000600		<b>20350/-</b>
<b>OI 8105</b>	Interaxle Shaft Assly. Tata Lps 4923	RSB 490	6"	25"	INA490005 /	501141120115	<b>18000/-</b>
<b>OI 8105TG</b>	Interaxle Shaft Assly. Tata Lps 4923 (Teflon) (With Waterproof Cross)	(48x135)	(150mm)	(625mm)	A1404903484376320033		<b>19500/-</b>
<b>OI 8106</b>	Interaxle Shaft Assly. Tata Lpk 3118 TC 56 Wb Srt Axle	RSB 490	6"	26"	INA490002 /	287941120104	<b>19190/-</b>
<b>OI 8106TG</b>	Interaxle Shaft Assly. Tata Lpk 3118 (Teflon) (With Waterproof Cross)	(48x135)	(150mm)	(665mm)	A1404903474326320032	501341120104	<b>20830/-</b>
<b>OI 8107</b>	Tata Lpk 2523/2518g 1150 Tml Inv Susp Vecv-Pro	RSB 590	6"	23½"	INA590H07 /	220741120125	<b>23880/-</b>
<b>OI 8107TG</b>	Tata Lpk 2523/2518g 1150 Tml Inv (Teflon) (Waterproof Cross)	(52x147)	(150mm)	(595mm)	A140590X34430R8000	VECV-ID-333097	<b>25800/-</b>
<b>OI 8108</b>	Interaxle Shaft Assly. Tata Prima Lx 2523, 5038 s, 2523 Tk	RSB 590	6"	24"	INA590H02 /	504241120110	<b>24030/-</b>
<b>OI 8108TG</b>	Tata Prima Lx 2523, 5038 s, (Teflon) (With Waterproof Cross)	(52x147)	(150mm)	(610mm)	A140590H344446R8000610		<b>25960/-</b>
<b>OI 8109</b>	Interaxle Shaft Assly. Tata Lpk 3118 Lptk 3718, Lpk 2518	RSB 590	6"	26½"	INA590H01 /	216741120186	<b>25100/-</b>
<b>OI 8109TG</b>	Tata Lpk 3118 Lptk 3718, Lpk 2518 (Teflon) (With Waterproof Cross)	(52x147)	(150mm)	(675mm)	A140590H344470		<b>27500/-</b>

Part No.	Description	Series	Cross Size	Ref. Catalogue Page No.	M.R.P. ₹
<b>UJ 901</b>	U.J Cross, Tata 1312, 1612, 1510, 1516, 2213, 2416	1312	46 mm	90	<b>1280/-</b>
<b>UJ 902</b>	U.J Cross, Tata 1210	1210	38 mm	90	<b>890/-</b>
<b>UJ 903</b>	U.J Cross, Tata 2515 Ex, L/L 2214, 3516, 2516	SPR SPL 90	41.27 x 126	90	<b>1280/-</b>
<b>UJ 904</b>	U.J Cross, L/L Tusker (MSL Type), Eicher	Tusker	34.92 x 126.20	90	<b>1040/-</b>
<b>UJ 905</b>	U.J Cross, Tata 4018, Mahindra Navistar, AMW	4018 Patti Type	49.20 x 154.90	90	<b>2370/-</b>
<b>UJ 906</b>	U.J Cross, Tata 2515 Ex, 1613 Turbo	RSB 325	42 x 119	90	<b>1380/-</b>
<b>UJ 907</b>	U.J Cross, Tata 2518, Hywa (Single Roller)	RSB 403	42 x 129	90	<b>1530/-</b>
<b>UJ 908</b>	U.J Cross, Tata 4018/ 3118 (Single Roller)	RSB 490	48 x 135	90	<b>1820/-</b>
<b>UJ 909</b>	U.J Cross, Tata 2515, L/L 3518, Mahindra Navistar	SPR / MSL 2040	47.62 x 135	90	<b>1830/-</b>
<b>UJ 910</b>	U.J Cross, Tata 4928, Prima, Volvo, Bharat Benz	RSB 590 / SPR 2045	52 x 147	90	<b>2860/-</b>
<b>UJ 911</b>	U.J Cross, Tata 4928, Prima, Volvo, Bharat Benz	RSB 620 / SPR 2055	57 x 152	90	<b>3020/-</b>
<b>UJ 912</b>	U.J Cross, Bedford J-4, L/L 370	L/L 370	39.68 x 115.40	91	<b>1080/-</b>
<b>UJ 913</b>	U.J Cross, Tata 407	407	30 x 81.80	91	<b>610/-</b>
<b>UJ 914</b>	U.J Cross, Canter N/M, Swaraj Mazda	Canter	30.17 x 106.30	91	<b>790/-</b>
<b>UJ 915</b>	U.J Cross, Tata 407, MSL Type	DCM	30.17 x 92	91	<b>790/-</b>
<b>UJ 916</b>	U.J Cross, Tata 407 Pick up, J.C. B, 3 DX	Pick up	34.92 x 106.35	91	<b>990/-</b>
<b>UJ 917</b>	U.J Cross, Jeep Diesel, Bolero, Marshal	Jeep	27 x 81.80	91	<b>570/-</b>
<b>UJ 918</b>	U.J Cross, Tata 2523, L/L 4923	RSB 585	48 x 152	91	<b>3010/-</b>
<b>UJ 919</b>	U.J Cross, Tata 3138, L/L 2636, Eicher 40T	SPR 2060	59 x 167.7	91	<b>5020/-</b>
<b>UJ 920</b>	U.J Cross, Tata 2528, L/L 4923	SPR 2065	65 x 172.7	91	<b>6470/-</b>
<b>UJ 921</b>	U.J Cross, Tata Ace (Old Model)	Tata Ace	23.82 x 34.90	91	<b>490/-</b>
<b>UJ 922</b>	U.J Cross, Tata Ace Magic	Tata Ace Magic	22 x 55	91	<b>490/-</b>
<b>UJ 923</b>	U.J Cross, L/L Dost	L/L Dost	27 x 81.62	91	<b>570/-</b>
<b>UJ 924</b>	U.J Cross, Tata 4018/ 3118 (Single Roller) (Grease Less)	RSB 490	48 x 135	90	<b>2230/-</b>
<b>UJ 925</b>	U.J Cross, Tata 2515, L/L 3518, Mahindra Navistar (Grease Less)	SPR/ MSL 2040	47.62 x 135	90	<b>2270/-</b>
<b>UJ 926</b>	U.J Cross, Tata 4928, Prima, Volvo, Bharat Benz (Grease Less)	RSB 590 / SPR 2045	52 x 147	90	<b>3610/-</b>
<b>UJ 927</b>	U.J Cross, Tata 4928, Prima, Volvo, Bharat Benz (Grease Less)	RSB 620 / SPR 2055	57 x 152	90	<b>4490/-</b>
<b>UJ 928</b>	U.J Cross, Jeep Diesel, Bolero, Marshal (Grease Less)	Jeep	27 x 81.80	91	<b>780/-</b>
<b>UJ 929</b>	U.J Cross, Rotavator Inner Lock, HSN Code - 8483	Rotavator	38 x 57	91	<b>890/-</b>
<b>UJ 930</b>	U.J Cross, Shaktiman, Sonalika, Outer Lock, HSN Code-8483	Tractor	38 x 57	91	<b>890/-</b>
<b>UJ 931</b>	U.J Cross, Volvo	RSB 680	57 x 172.5	91	



**PROPELLER SHAFT &  
STEERING COMPONENTS**



**Replacement Parts for Latest Vehicles:**

- TATA** : YODHA, ACE, 407, 407 Turbo Ex, 410, 412, 608, 709, 712, 713, 809, 1109, 1116, 1210, S.E., 1212, 1312, 1510 T.C., 1612, 1613 Turbo, 1618, 1828, 2214, 2515, 2516, 2530, 2630, 3116, 3118, 3123, 3128, 3516, 4018, 4023, 4028, 4825, 4923, 4928, Prima, Ultra.
- LEYLAND** : Dost, Viking, Cheetah, 350, 370, Tusker, Taurus, Stag, E-Comet, 1612, 1616, 1828, 2214, 2515, 2523, 2630, 3116, 3120, 3123, 3138, 3516, 3518, 3718, 4018, 4019, 4023, 4923.
- OTHERS** : AMW, EICHER, BHARAT BENZ, VOLVO, MAN, & MAHINDRA RANGE
- RSB** : 135, 325, 403, 490, 585, 590, 592, 620, 680 Series
- SPICER** : SPL-90, 1710, 2040, 2045, 2047, 2055, 2060, 2065 Series
- MSL** : 1310, 1350, 1410, 1480, 1550, 1610, 1650, 2040 Series

**MOHIT INTERNATIONAL**

Mfrs. of Propeller Shaft & Steering Components

Backside Transport Nagar, Adjoining Focal Point  
Gadaipur Road, Jalandhar City-144 004 (Pb.) INDIA

E-mail : [info@shaftcomponents.com](mailto:info@shaftcomponents.com)

Customer Care : 98146-38487, 99148-99900

**WWW.SHAFTCOMPONENTS.COM**